

DATASHEET

eIF3 beta Rabbit Polyclonal Antibody

CAT. NO. APA15532

KEY FEATURES

Target	eIF3 beta	Source / Host	Rabbit
Reactivity	Human, Mouse, Rat	Clonality	Polyclonal
Applications	WB	Conjugation	Unconjugated
Form / Buffer	Liquid in 0.42% Potassium phosphate, 0.87% Sodium chloride, pH 7.3, 30% glycerol, and 0.01% sodium azide.		Storage at -20°C

BACKGROUND

Component of the eukaryotic translation initiation factor 3 (eIF-3) complex, which is required for several steps in the initiation of protein synthesis complex, which is required for several steps in the initiation of protein synthesis. The eIF-3 complex associates with the 40S ribosome and facilitates the recruitment of eIF-1, eIF-1A, eIF-2:GTP:methionyl-tRNA_i and eIF-5 to form the 43S pre-initiation complex (43S PIC). The eIF-3 complex stimulates mRNA recruitment to the 43S PIC and scanning of the mRNA for AUG recognition. The eIF-3 complex is also required for disassembly and recycling of post-termination ribosomal complexes and subsequently prevents premature joining of the 40S and 60S ribosomal subunits prior to initiation.

APPLICATION

To ensure optimal assay performance, AREX recommends conducting reagent titration tailored to each testing system for optimal detection results.

WB	1:500 - 1:2000
----	----------------

*Results are sample-specific. Please refer to your local assay conditions and test parameters for reference.

PRODUCT OVERVIEW

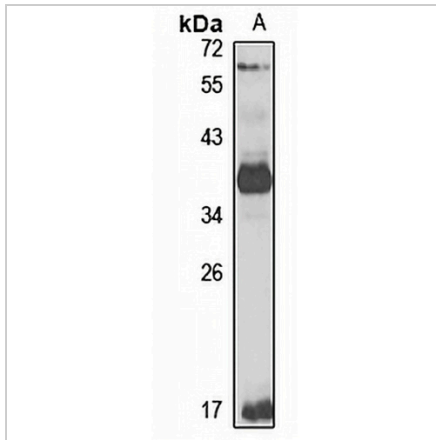
Description	Rabbit polyclonal antibody to eIF3 beta
Specificity	Recognizes endogenous levels of eIF3 beta protein
Antibody Type	Primary antibody
Immunogen	Recombinant fusion protein of human eIF3 beta. The exact sequence is proprietary.
Purification	The antibody was purified by immunogen affinity chromatography.
Molecular Weight	Predicted: 36 kD; Observed: 37 kD
Form/Buffer	Liquid in 0.42% Potassium phosphate, 0.87% Sodium chloride, pH 7.3, 30% glycerol, and 0.01% sodium azide.
Alternative Names	EIF3S2; TRIP1; Eukaryotic translation initiation factor 3 subunit I; eIF3i; Eukaryotic translation initiation factor 3 subunit 2; TGF-beta receptor-interacting protein 1; TRIP-1; eIF-3-beta; eIF3 p36
Gene Symbol	EIF3I
Entrez Gene	8668(Human); 54709(Mouse); 682390(Rat)
SwissProt	Q13347(Human); Q9QZD9(Mouse); B0BNA7(Rat)

*AREX continuously optimizes our products. Webpage content may not reflect the latest updates. For inquiries, please contact info@arexbio.com or your local distributor.

*Clone Number, Reactivity, Source/Host and Clonality can be found in the product name and Key Features section above.

DATASHEET**eIF3 beta Rabbit Polyclonal Antibody**

CAT. NO. APA15532

DATA

Western blot analysis of eIF3 beta expression in Jurkat (A) whole cell lysates. (Predicted band size: 36 kD; Observed band size: 37 kD)

STORAGE

Store at 4°C short term. For long term storage, store at -20°C, avoiding freeze/thaw cycles.

NOTE

For Research Use Only. Not for diagnostic, therapeutics, prophylactic or in vivo use.