

DATASHEET

4E-BP2 Rabbit Polyclonal Antibody

CAT. NO. APA15533

KEY FEATURES

Target	4E-BP2	Source / Host	Rabbit
Reactivity	Human	Clonality	Polyclonal
Applications	WB	Conjugation	Unconjugated
Form / Buffer	Liquid in 0.42% Potassium phosphate, 0.87% Sodium chloride, pH 7.3, 30% glycerol, and 0.01% sodium azide.		Storage at -20°C

BACKGROUND

Repressor of translation initiation involved in synaptic plasticity, learning and memory formation . Regulates EIF4E activity by preventing its assembly into the eIF4F complex: hypophosphorylated form of EIF4EBP2 competes with EIF4G1/EIF4G3 and strongly binds to EIF4E, leading to repress translation. In contrast, hyperphosphorylated form dissociates from EIF4E, allowing interaction between EIF4G1/EIF4G3 and EIF4E, leading to initiation of translation . EIF4EBP2 is enriched in brain and acts as a regulator of synapse activity and neuronal stem cell renewal via its ability to repress translation initiation . Mediates the regulation of protein translation by hormones, growth factors and other stimuli that signal through the MAP kinase and mTORC1 pathways .

APPLICATION

To ensure optimal assay performance, AREX recommends conducting reagent titration tailored to each testing system for optimal detection results.

WB	1:500 - 1:2000
----	----------------

*Results are sample-specific. Please refer to your local assay conditions and test parameters for reference.

PRODUCT OVERVIEW

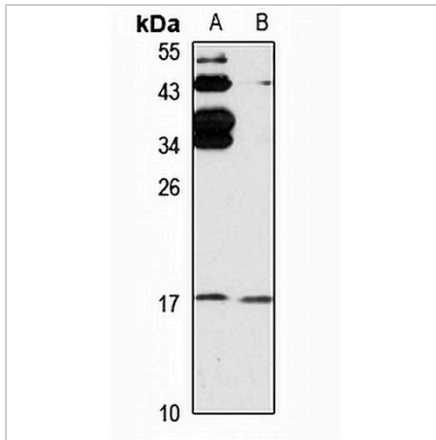
Description	Rabbit polyclonal antibody to 4E-BP2
Specificity	Recognizes endogenous levels of 4E-BP2 protein
Antibody Type	Primary antibody
Immunogen	Recombinant fusion protein of human 4E-BP2. The exact sequence is proprietary.
Purification	The antibody was purified by immunogen affinity chromatography.
Molecular Weight	Predicted: 12 kD; Observed: 16 kD
Form/Buffer	Liquid in 0.42% Potassium phosphate, 0.87% Sodium chloride, pH 7.3, 30% glycerol, and 0.01% sodium azide.
Alternative Names	Eukaryotic translation initiation factor 4E-binding protein 2; 4E-BP2; eIF4E-binding protein 2
Gene Symbol	EIF4EBP2
Entrez Gene	1979(Human)
SwissProt	Q13542(Human)

*AREX continuously optimizes our products. Webpage content may not reflect the latest updates. For inquiries, please contact info@arexbio.com or your local distributor.

*Clone Number, Reactivity, Source/Host and Clonality can be found in the product name and Key Features section above.

DATASHEET**4E-BP2 Rabbit Polyclonal Antibody**

CAT. NO. APA15533

DATA

Western blot analysis of 4E-BP2 expression in HeLa (A), Jurkat (B) whole cell lysates.
(Predicted band size: 12 kD; Observed band size: 16 kD)

STORAGE

Store at 4°C short term. For long term storage, store at -20°C, avoiding freeze/thaw cycles.

NOTE

For Research Use Only. Not for diagnostic, therapeutics, prophylactic or in vivo use.