

**DATASHEET**

**eIF4GII Rabbit Polyclonal Antibody**

CAT. NO. APA15534

**KEY FEATURES**

Target	eIF4GII	Source / Host	Rabbit
Reactivity	Human, Mouse	Clonality	Polyclonal
Applications	WB, IHC	Conjugation	Unconjugated
Form / Buffer	Liquid in 0.42% Potassium phosphate, 0.87% Sodium chloride, pH 7.3, 30% glycerol, and 0.01% sodium azide.		Storage at-20°C

**BACKGROUND**

Component of the protein complex eIF4F, which is involved in the recognition of the mRNA cap, ATP-dependent unwinding of 5'-terminal secondary structure and recruitment of mRNA to the ribosome . Functional homolog of EIF4G1 .

**APPLICATION**

To ensure optimal assay performance, AREX recommends conducting reagent titration tailored to each testing system for optimal detection results.

WB	1:500 - 1:1000
IHC	1:50 - 1:100

\*Results are sample-specific. Please refer to your local assay conditions and test parameters for reference.

**PRODUCT OVERVIEW**

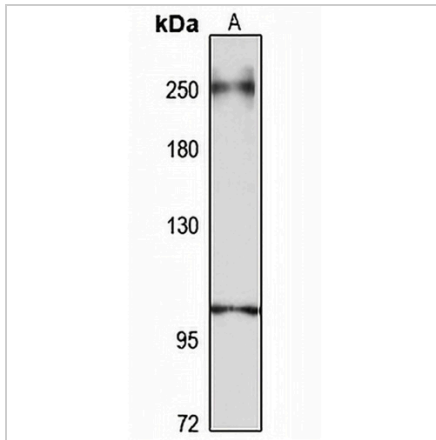
Description	Rabbit polyclonal antibody to eIF4GII
Specificity	Recognizes endogenous levels of eIF4GII protein
Antibody Type	Primary antibody
Immunogen	Recombinant fusion protein of human eIF4GII. The exact sequence is proprietary.
Purification	The antibody was purified by immunogen affinity chromatography.
Molecular Weight	Predicted: 55; Observed: 250 kD
Form/Buffer	Liquid in 0.42% Potassium phosphate, 0.87% Sodium chloride, pH 7.3, 30% glycerol, and 0.01% sodium azide.
Alternative Names	Eukaryotic translation initiation factor 4 gamma 3; eIF-4-gamma 3; eIF-4G 3; eIF4G 3; eIF-4-gamma II; eIF4GII
Gene Symbol	EIF4G3
Entrez Gene	8672(Human); 230861(Mouse)
SwissProt	O43432(Human); Q80XI3(Mouse)

\*AREX continuously optimizes our products. Webpage content may not reflect the latest updates. For inquiries, please contact [info@arexbio.com](mailto:info@arexbio.com) or your local distributor.

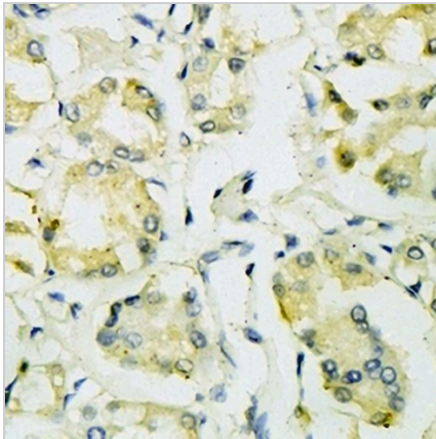
\*Clone Number, Reactivity, Source/Host and Clonality can be found in the product name and Key Features section above.

**DATASHEET****eIF4GII Rabbit Polyclonal Antibody**

CAT. NO. APA15534

**DATA**

Western blot analysis of eIF4GII expression in HeLa (A) whole cell lysates. (Predicted band size: 55; 146; 176; 177 kD; Observed band size: 250 kD)



Immunohistochemical analysis of eIF4GII staining in human stomach cancer formalin fixed paraffin embedded tissue section. The section was pre-treated using heat mediated antigen retrieval with sodium citrate buffer (pH 6.0). The section was then incubated with the antibody at room temperature and detected using an HRP conjugated compact polymer system. DAB was used as the chromogen. The section was then counterstained with haematoxylin and mounted with DPX.

**STORAGE**

Store at 4°C short term. For long term storage, store at -20°C, avoiding freeze/thaw cycles.

**NOTE**

For Research Use Only. Not for diagnostic, therapeutics, prophylactic or in vivo use.