

DATASHEET

Elmo2 Rabbit Polyclonal Antibody

CAT. NO. APA15537

KEY FEATURES

Target	Elmo2	Source / Host	Rabbit
Reactivity	Human, Mouse, Rat	Clonality	Polyclonal
Applications	WB	Conjugation	Unconjugated
Form / Buffer	Liquid in 0.42% Potassium phosphate, 0.87% Sodium chloride, pH 7.3, 30% glycerol, and 0.01% sodium azide.		Storage at -20°C

BACKGROUND

Involved in cytoskeletal rearrangements required for phagocytosis of apoptotic cells and cell motility. Acts in association with DOCK1 and CRK. Was initially proposed to be required in complex with DOCK1 to activate Rac Rho small GTPases. May enhance the guanine nucleotide exchange factor (GEF) activity of DOCK1.

APPLICATION

To ensure optimal assay performance, AREX recommends conducting reagent titration tailored to each testing system for optimal detection results.

WB	1:500 - 1:2000
----	----------------

*Results are sample-specific. Please refer to your local assay conditions and test parameters for reference.

PRODUCT OVERVIEW

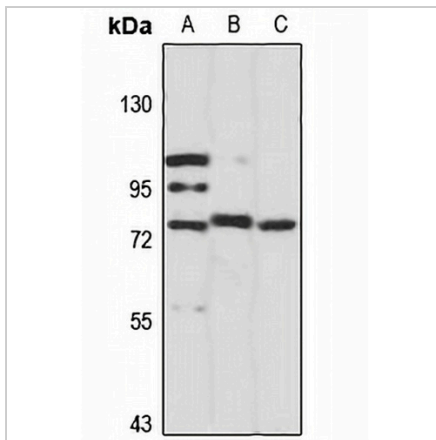
Description	Rabbit polyclonal antibody to Elmo2
Specificity	Recognizes endogenous levels of Elmo2 protein
Antibody Type	Primary antibody
Immunogen	Recombinant fusion protein of human Elmo2. The exact sequence is proprietary.
Purification	The antibody was purified by immunogen affinity chromatography.
Molecular Weight	Predicted: 72; Observed: 72 kD
Form/Buffer	Liquid in 0.42% Potassium phosphate, 0.87% Sodium chloride, pH 7.3, 30% glycerol, and 0.01% sodium azide.
Alternative Names	CED12A; KIAA1834; Engulfment and cell motility protein 2; Protein ced-12 homolog A; hCed-12A
Gene Symbol	ELMO2
Entrez Gene	63916(Human); 140579(Mouse)
SwissProt	Q96JJ3(Human); Q8BHL5(Mouse)

*AREX continuously optimizes our products. Webpage content may not reflect the latest updates. For inquiries, please contact info@arexbio.com or your local distributor.

*Clone Number, Reactivity, Source/Host and Clonality can be found in the product name and Key Features section above.

DATASHEET**Elmo2 Rabbit Polyclonal Antibody**

CAT. NO. APA15537

DATA

Western blot analysis of Elmo2 expression in HeLa (A), mouse brain (B), rat brain (C) whole cell lysates. (Predicted band size: 72; 82 kD; Observed band size: 72 kD)

STORAGE

Store at 4°C short term. For long term storage, store at -20°C, avoiding freeze/thaw cycles.

NOTE

For Research Use Only. Not for diagnostic, therapeutics, prophylactic or in vivo use.