

**DATASHEET**

**ELOVL2 Rabbit Polyclonal Antibody**

CAT. NO. APA15538

**KEY FEATURES**

Target	ELOVL2	Source / Host	Rabbit
Reactivity	Human, Rat	Clonality	Polyclonal
Applications	WB	Conjugation	Unconjugated
Form / Buffer	Liquid in 0.42% Potassium phosphate, 0.87% Sodium chloride, pH 7.3, 30% glycerol, and 0.01% sodium azide.		Storage at -20°C

**BACKGROUND**

Catalyzes the first and rate-limiting reaction of the four reactions that constitute the long-chain fatty acids elongation cycle. This endoplasmic reticulum-bound enzymatic process allows the addition of 2 carbons to the chain of long- and very long-chain fatty acids (VLCFAs) per cycle. Condensing enzyme that catalyzes the synthesis of polyunsaturated very long chain fatty acid (C20- and C22-PUFA), acting specifically toward polyunsaturated acyl-CoA with the higher activity toward C20:4(n-6) acyl-CoA. May participate in the production of polyunsaturated VLCFAs of different chain lengths that are involved in multiple biological processes as precursors of membrane lipids and lipid mediators.

**APPLICATION**

To ensure optimal assay performance, AREX recommends conducting reagent titration tailored to each testing system for optimal detection results.

WB	1:500 - 1:2000
----	----------------

\*Results are sample-specific. Please refer to your local assay conditions and test parameters for reference.

**PRODUCT OVERVIEW**

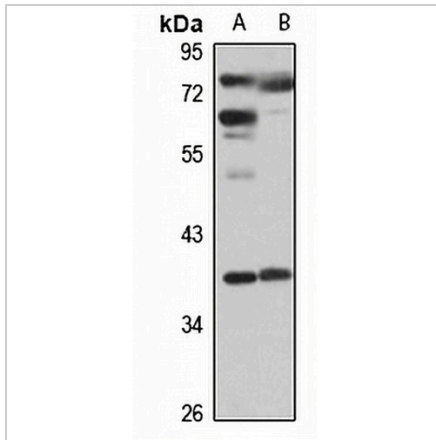
Description	Rabbit polyclonal antibody to ELOVL2
Specificity	Recognizes endogenous levels of ELOVL2 protein
Antibody Type	Primary antibody
Immunogen	Recombinant fusion protein of human ELOVL2. The exact sequence is proprietary.
Purification	The antibody was purified by immunogen affinity chromatography.
Molecular Weight	Predicted: 34 kD; Observed: 38 kD
Form/Buffer	Liquid in 0.42% Potassium phosphate, 0.87% Sodium chloride, pH 7.3, 30% glycerol, and 0.01% sodium azide.
Alternative Names	SSC2; Elongation of very long chain fatty acids protein 2; 3-keto acyl-CoA synthase ELOVL2; ELOVL fatty acid elongase 2; ELOVL FA elongase 2; Very-long-chain 3-oxoacyl-CoA synthase 2
Gene Symbol	ELOVL2
Entrez Gene	54898(Human); 498728(Rat)
SwissProt	Q9NXB9(Human); D4A612(Rat)

\*AREX continuously optimizes our products. Webpage content may not reflect the latest updates. For inquiries, please contact [info@arexbio.com](mailto:info@arexbio.com) or your local distributor.

\*Clone Number, Reactivity, Source/Host and Clonality can be found in the product name and Key Features section above.

**DATASHEET****ELOVL2 Rabbit Polyclonal Antibody**

CAT. NO. APA15538

**DATA**

Western blot analysis of ELOVL2 expression in HepG2 (A), rat testis (B) whole cell lysates. (Predicted band size: 34 kD; Observed band size: 38 kD)

**STORAGE**

Store at 4°C short term. For long term storage, store at -20°C, avoiding freeze/thaw cycles.

**NOTE**

For Research Use Only. Not for diagnostic, therapeutics, prophylactic or in vivo use.