

DATASHEET

ELP5 Rabbit Polyclonal Antibody

CAT. NO. APA15540

KEY FEATURES

| | | | |
|---------------|---|---------------|---------------------|
| Target | ELP5 | Source / Host | Rabbit |
| Reactivity | Human, Mouse, Rat | Clonality | Polyclonal |
| Applications | WB | Conjugation | Unconjugated |
| Form / Buffer | Liquid in 0.42% Potassium phosphate, 0.87% Sodium chloride, pH 7.3, 30% glycerol, and 0.01% sodium azide. | | Storage at -20°C |

BACKGROUND

Component of the elongator complex which is required for multiple tRNA modifications, including mcm5U (5-methoxycarbonylmethyl uridine), mcm5s2U (5-methoxycarbonylmethyl-2-thiouridine), and ncm5U (5-carbamoylmethyl uridine), mcm5s2U (5-methoxycarbonylmethyl-2-thiouridine), and ncm5U (5-carbamoylmethyl uridine). The elongator complex catalyzes formation of carboxymethyluridine in the wobble base at position 34 in tRNAs. Involved in cell migration.

APPLICATION

To ensure optimal assay performance, AREX recommends conducting reagent titration tailored to each testing system for optimal detection results.

| | |
|----|----------------|
| WB | 1:500 - 1:2000 |
|----|----------------|

*Results are sample-specific. Please refer to your local assay conditions and test parameters for reference.

PRODUCT OVERVIEW

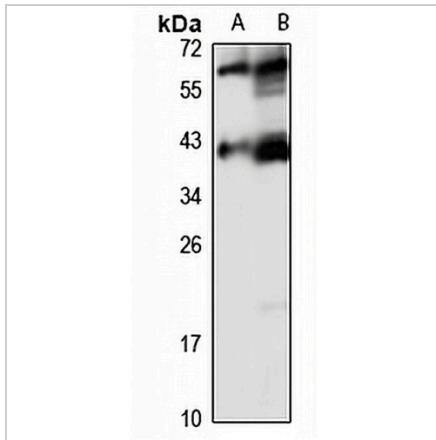
| | |
|-------------------|---|
| Description | Rabbit polyclonal antibody to ELP5 |
| Specificity | Recognizes endogenous levels of ELP5 protein |
| Antibody Type | Primary antibody |
| Immunogen | Recombinant fusion protein of human ELP5. The exact sequence is proprietary. |
| Purification | The antibody was purified by immunogen affinity chromatography. |
| Molecular Weight | Predicted: 19; Observed: 38 kD |
| Form/Buffer | Liquid in 0.42% Potassium phosphate, 0.87% Sodium chloride, pH 7.3, 30% glycerol, and 0.01% sodium azide. |
| Alternative Names | C17orf81; DERP6; Elongator complex protein 5; Dermal papilla-derived protein 6; S-phase 2 protein |
| Gene Symbol | ELP5 |
| Entrez Gene | 23587(Human); 54351(Mouse); 287446(Rat) |
| SwissProt | Q8TE02(Human); Q99L85(Mouse); Q6IUP3(Rat) |

*AREX continuously optimizes our products. Webpage content may not reflect the latest updates. For inquiries, please contact info@arexbio.com or your local distributor.

*Clone Number, Reactivity, Source/Host and Clonality can be found in the product name and Key Features section above.

DATASHEET**ELP5 Rabbit Polyclonal Antibody**

CAT. NO. APA15540

DATA

Western blot analysis of ELP5 expression in A375 (A), mouse brain (B) whole cell lysates.
(Predicted band size: 19; 30; 34; 35 kD; Observed band size: 38 kD)

STORAGE

Store at 4°C short term. For long term storage, store at -20°C, avoiding freeze/thaw cycles.

NOTE

For Research Use Only. Not for diagnostic, therapeutics, prophylactic or in vivo use.