

DATASHEET

ELTD1 Rabbit Polyclonal Antibody

CAT. NO. APA15541

KEY FEATURES

Target	ELTD1	Source / Host	Rabbit
Reactivity	Human, Mouse, Rat	Clonality	Polyclonal
Applications	WB	Conjugation	Unconjugated
Form / Buffer	Liquid in 0.42% Potassium phosphate, 0.87% Sodium chloride, pH 7.3, 30% glycerol, and 0.01% sodium azide.		Storage at -20°C

BACKGROUND

Endothelial orphan receptor that acts as a key regulator of angiogenesis.

APPLICATION

To ensure optimal assay performance, AREX recommends conducting reagent titration tailored to each testing system for optimal detection results.

WB	1:500 - 1:2000
----	----------------

*Results are sample-specific. Please refer to your local assay conditions and test parameters for reference.

PRODUCT OVERVIEW

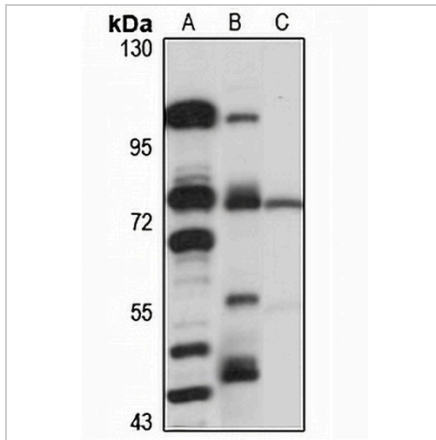
Description	Rabbit polyclonal antibody to ELTD1
Specificity	Recognizes endogenous levels of ELTD1 protein
Antibody Type	Primary antibody
Immunogen	Recombinant fusion protein of human ELTD1. The exact sequence is proprietary.
Purification	The antibody was purified by immunogen affinity chromatography.
Molecular Weight	Predicted: 77 kD; Observed: 78 kD
Form/Buffer	Liquid in 0.42% Potassium phosphate, 0.87% Sodium chloride, pH 7.3, 30% glycerol, and 0.01% sodium azide.
Alternative Names	ETL; EGF latrophilin and seven transmembrane domain-containing protein 1; EGF-TM7-latrophilin-related protein; ETL protein
Gene Symbol	ELTD1
Entrez Gene	64123(Human); 170757(Mouse); 64124(Rat)
SwissProt	Q9HBW9(Human); Q923X1(Mouse); Q9ESC1(Rat)

*AREX continuously optimizes our products. Webpage content may not reflect the latest updates. For inquiries, please contact info@arexbio.com or your local distributor.

*Clone Number, Reactivity, Source/Host and Clonality can be found in the product name and Key Features section above.

DATASHEET**ELTD1 Rabbit Polyclonal Antibody**

CAT. NO. APA15541

DATA

Western blot analysis of ELTD1 expression in LO2 (A), mouse heart (B), rat kidney (C) whole cell lysates. (Predicted band size: 77 kD; Observed band size: 78 kD)

STORAGE

Store at 4°C short term. For long term storage, store at -20°C, avoiding freeze/thaw cycles.

NOTE

For Research Use Only. Not for diagnostic, therapeutics, prophylactic or in vivo use.