

**DATASHEET**

**Eme2 Rabbit Polyclonal Antibody**

CAT. NO. APA15543

**KEY FEATURES**

Target	Eme2	Source / Host	Rabbit
Reactivity	Human	Clonality	Polyclonal
Applications	WB	Conjugation	Unconjugated
Form / Buffer	Liquid in 0.42% Potassium phosphate, 0.87% Sodium chloride, pH 7.3, 30% glycerol, and 0.01% sodium azide.		Storage at -20°C

**BACKGROUND**

Non-catalytic subunit of the structure-specific, heterodimeric DNA endonuclease MUS81-EME2 which is involved in the maintenance of genome stability. In the complex, EME2 is required for DNA cleavage, participating in DNA recognition and bending . MUS81-EME2 cleaves 3'-flaps and nicked Holliday junctions, and exhibit limited endonuclease activity with 5' flaps and nicked double-stranded DNAs . MUS81-EME2 which is active during the replication of DNA is more specifically involved in replication fork processing . Replication forks frequently encounter obstacles to their passage, including DNA base lesions, DNA interstrand cross-links, difficult-to-replicate sequences, transcription bubbles, or tightly bound proteins.

**APPLICATION**

To ensure optimal assay performance, AREX recommends conducting reagent titration tailored to each testing system for optimal detection results.

WB	1:500 - 1:2000
----	----------------

\*Results are sample-specific. Please refer to your local assay conditions and test parameters for reference.

**PRODUCT OVERVIEW**

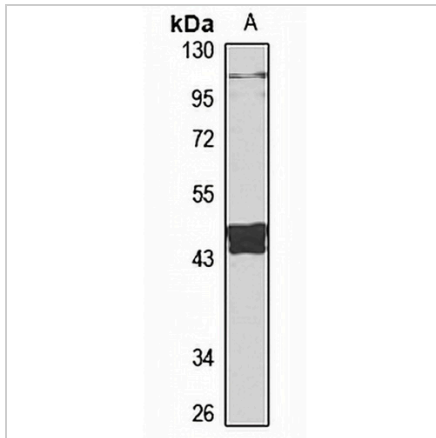
Description	Rabbit polyclonal antibody to Eme2
Specificity	Recognizes endogenous levels of Eme2 protein
Antibody Type	Primary antibody
Immunogen	Recombinant fusion protein of human Eme2. The exact sequence is proprietary.
Purification	The antibody was purified by immunogen affinity chromatography.
Molecular Weight	Predicted: 26; Observed: 41 kD
Form/Buffer	Liquid in 0.42% Potassium phosphate, 0.87% Sodium chloride, pH 7.3, 30% glycerol, and 0.01% sodium azide.
Alternative Names	Probable crossover junction endonuclease EME2
Gene Symbol	EME2
Entrez Gene	197342(Human)
SwissProt	A4GXA9(Human)

\*AREX continuously optimizes our products. Webpage content may not reflect the latest updates. For inquiries, please contact [info@arexbio.com](mailto:info@arexbio.com) or your local distributor.

\*Clone Number, Reactivity, Source/Host and Clonality can be found in the product name and Key Features section above.

**DATASHEET****Eme2 Rabbit Polyclonal Antibody**

CAT. NO. APA15543

**DATA**

Western blot analysis of Eme2 expression in HT29 (A) whole cell lysates. (Predicted band size: 26; 41 kD; Observed band size: 41 kD)

**STORAGE**

Store at 4°C short term. For long term storage, store at -20°C, avoiding freeze/thaw cycles.

**NOTE**

For Research Use Only. Not for diagnostic, therapeutics, prophylactic or in vivo use.