

**DATASHEET**

**EMG1 Rabbit Polyclonal Antibody**

CAT. NO. APA15544

**KEY FEATURES**

Target	EMG1	Source / Host	Rabbit
Reactivity	Human, Mouse, Rat	Clonality	Polyclonal
Applications	WB	Conjugation	Unconjugated
Form / Buffer	Liquid in 0.42% Potassium phosphate, 0.87% Sodium chloride, pH 7.3, 30% glycerol, and 0.01% sodium azide.		Storage at -20°C

**BACKGROUND**

S-adenosyl-L-methionine-dependent pseudouridine N(1)-methyltransferase that methylates pseudouridine at position 1248 (Psi1248) in 18S rRNA. Involved the biosynthesis of the hypermodified N1-methyl-N3-(3-amino-3-carboxypropyl) pseudouridine (m1acp3-Psi) conserved in eukaryotic 18S rRNA. Is not able to methylate uridine at this position -methyltransferase that methylates pseudouridine at position 1248 (Psi1248) in 18S rRNA. Involved the biosynthesis of the hypermodified N1-methyl-N3-(3-amino-3-carboxypropyl) pseudouridine (m1acp3-Psi) conserved in eukaryotic 18S rRNA. Is not able to methylate uridine at this position .

**APPLICATION**

To ensure optimal assay performance, AREX recommends conducting reagent titration tailored to each testing system for optimal detection results.

WB	1:500 - 1:2000
----	----------------

\*Results are sample-specific. Please refer to your local assay conditions and test parameters for reference.

**PRODUCT OVERVIEW**

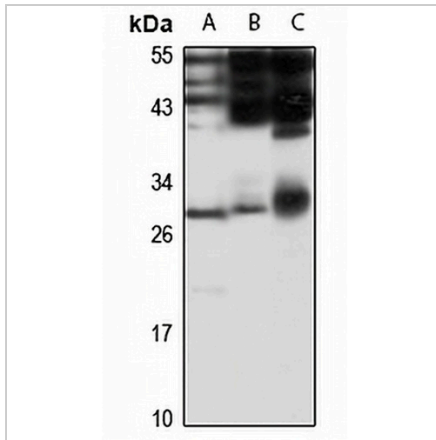
Description	Rabbit polyclonal antibody to EMG1
Specificity	Recognizes endogenous levels of EMG1 protein
Antibody Type	Primary antibody
Immunogen	Recombinant fusion protein of human EMG1. The exact sequence is proprietary.
Purification	The antibody was purified by immunogen affinity chromatography.
Molecular Weight	Predicted: 26 kD; Observed: 27 kD
Form/Buffer	Liquid in 0.42% Potassium phosphate, 0.87% Sodium chloride, pH 7.3, 30% glycerol, and 0.01% sodium azide.
Alternative Names	C2f; Ribosomal RNA small subunit methyltransferase NEP1; 18S rRNA (pseudouridine-N1-)-methyltransferase NEP1; 18S rRNA Psi1248 methyltransferase; Nucleolar protein EMG1 homolog; Protein C2f; Ribosome biogenesis protein NEP1
Gene Symbol	EMG1
Entrez Gene	10436(Human); 14791(Mouse)
SwissProt	Q92979(Human); O35130(Mouse)

\*AREX continuously optimizes our products. Webpage content may not reflect the latest updates. For inquiries, please contact [info@arexbio.com](mailto:info@arexbio.com) or your local distributor.

\*Clone Number, Reactivity, Source/Host and Clonality can be found in the product name and Key Features section above.

**DATASHEET****EMG1 Rabbit Polyclonal Antibody**

CAT. NO. APA15544

**DATA**

Western blot analysis of EMG1 expression in HepG2 (A), mouse heart (B), rat liver (C) whole cell lysates. (Predicted band size: 26 kD; Observed band size: 27 kD)

**STORAGE**

Store at 4°C short term. For long term storage, store at -20°C, avoiding freeze/thaw cycles.

**NOTE**

For Research Use Only. Not for diagnostic, therapeutics, prophylactic or in vivo use.