

DATASHEET

EMILIN-1 Rabbit Polyclonal Antibody

CAT. NO. APA15545

KEY FEATURES

Target	EMILIN-1	Source / Host	Rabbit
Reactivity	Human	Clonality	Polyclonal
Applications	WB	Conjugation	Unconjugated
Form / Buffer	Liquid in 0.42% Potassium phosphate, 0.87% Sodium chloride, pH 7.3, 30% glycerol, and 0.01% sodium azide.		Storage at -20°C

BACKGROUND

Involved in elastic and collagen fibers formation. It is required for EFEMP2 deposition into the extracellular matrix, and collagen network assembly and cross-linking via protein-lysine 6-oxidase/LOX activity. May be responsible for anchoring smooth muscle cells to elastic fibers, and may be involved in the processes that regulate vessel assembly. Has cell adhesive capacity.

APPLICATION

To ensure optimal assay performance, AREX recommends conducting reagent titration tailored to each testing system for optimal detection results.

WB	1:500 - 1:2000
----	----------------

*Results are sample-specific. Please refer to your local assay conditions and test parameters for reference.

PRODUCT OVERVIEW

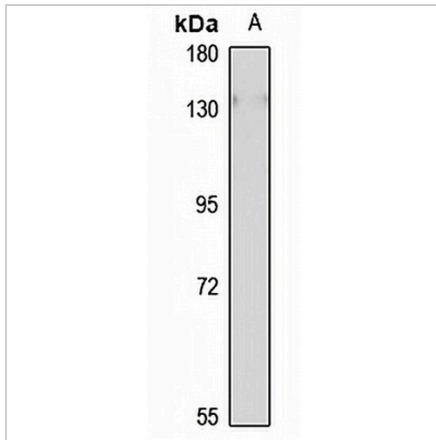
Description	Rabbit polyclonal antibody to EMILIN-1
Specificity	Recognizes endogenous levels of EMILIN-1 protein
Antibody Type	Primary antibody
Immunogen	Recombinant fusion protein of human EMILIN-1. The exact sequence is proprietary.
Purification	The antibody was purified by immunogen affinity chromatography.
Molecular Weight	Predicted: 35; Observed: 135 kD
Form/Buffer	Liquid in 0.42% Potassium phosphate, 0.87% Sodium chloride, pH 7.3, 30% glycerol, and 0.01% sodium azide.
Alternative Names	EMI; EMILIN-1; Elastin microfibril interface-located protein 1; Elastin microfibril interfacier 1
Gene Symbol	EMILIN1
Entrez Gene	11117(Human)
SwissProt	Q9Y6C2(Human)

*AREX continuously optimizes our products. Webpage content may not reflect the latest updates. For inquiries, please contact info@arexbio.com or your local distributor.

*Clone Number, Reactivity, Source/Host and Clonality can be found in the product name and Key Features section above.

DATASHEET**EMILIN-1 Rabbit Polyclonal Antibody**

CAT. NO. APA15545

DATA

Western blot analysis of EMILIN-1 expression in SKOV3 (A) whole cell lysates. (Predicted band size: 35; 106 kD; Observed band size: 135 kD)

STORAGE

Store at 4°C short term. For long term storage, store at -20°C, avoiding freeze/thaw cycles.

NOTE

For Research Use Only. Not for diagnostic, therapeutics, prophylactic or in vivo use.