

DATASHEET

EML1 Rabbit Polyclonal Antibody

CAT. NO. APA15546

KEY FEATURES

Target	EML1	Source / Host	Rabbit
Reactivity	Human, Mouse, Rat	Clonality	Polyclonal
Applications	WB	Conjugation	Unconjugated
Form / Buffer	Liquid in 0.42% Potassium phosphate, 0.87% Sodium chloride, pH 7.3, 30% glycerol, and 0.01% sodium azide.		Storage at -20°C

BACKGROUND

Modulates the assembly and organization of the microtubule cytoskeleton, and probably plays a role in regulating the orientation of the mitotic spindle and the orientation of the plane of cell division. Required for normal proliferation of neuronal progenitor cells in the developing brain and for normal brain development. Does not affect neuron migration per se.

APPLICATION

To ensure optimal assay performance, AREX recommends conducting reagent titration tailored to each testing system for optimal detection results.

WB	1:500 - 1:2000
----	----------------

*Results are sample-specific. Please refer to your local assay conditions and test parameters for reference.

PRODUCT OVERVIEW

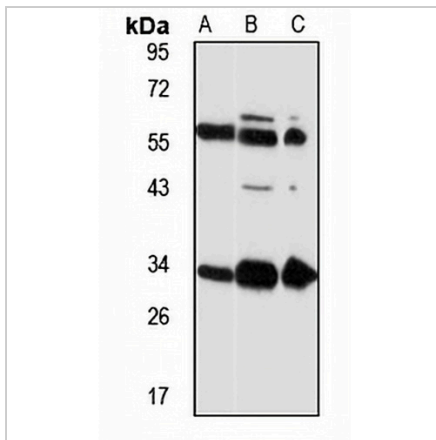
Description	Rabbit polyclonal antibody to EML1
Specificity	Recognizes endogenous levels of EML1 protein
Antibody Type	Primary antibody
Immunogen	Recombinant fusion protein of human EML1. The exact sequence is proprietary.
Purification	The antibody was purified by immunogen affinity chromatography.
Molecular Weight	Predicted: 89 kD; Observed: 33 kD
Form/Buffer	Liquid in 0.42% Potassium phosphate, 0.87% Sodium chloride, pH 7.3, 30% glycerol, and 0.01% sodium azide.
Alternative Names	EMAP1; EMAPL; EMAPL1; Echinoderm microtubule-associated protein-like 1; EMAP-1; HuEMAP-1
Gene Symbol	EML1
Entrez Gene	2009(Human); 68519(Mouse); 362783(Rat)
SwissProt	O00423(Human); Q05BC3(Mouse); Q4V8C3(Rat)

*AREX continuously optimizes our products. Webpage content may not reflect the latest updates. For inquiries, please contact info@arexbio.com or your local distributor.

*Clone Number, Reactivity, Source/Host and Clonality can be found in the product name and Key Features section above.

DATASHEET**EML1 Rabbit Polyclonal Antibody**

CAT. NO. APA15546

DATA

Western blot analysis of EML1 expression in U87MG (A), mouse brain (B), rat brain (C) whole cell lysates. (Predicted band size: 89 kD; Observed band size: 33 kD)

STORAGE

Store at 4°C short term. For long term storage, store at -20°C, avoiding freeze/thaw cycles.

NOTE

For Research Use Only. Not for diagnostic, therapeutics, prophylactic or in vivo use.