

**DATASHEET**

**EML2 Rabbit Polyclonal Antibody**

CAT. NO. APA15547

**KEY FEATURES**

Target	EML2	Source / Host	Rabbit
Reactivity	Human, Mouse, Rat	Clonality	Polyclonal
Applications	WB	Conjugation	Unconjugated
Form / Buffer	Liquid in 0.42% Potassium phosphate, 0.87% Sodium chloride, pH 7.3, 30% glycerol, and 0.01% sodium azide.		Storage at -20°C

**BACKGROUND**

Tubulin binding protein that inhibits microtubule nucleation and growth, resulting in shorter microtubules.

**APPLICATION**

To ensure optimal assay performance, AREX recommends conducting reagent titration tailored to each testing system for optimal detection results.

WB	1:500 - 1:2000
----	----------------

\*Results are sample-specific. Please refer to your local assay conditions and test parameters for reference.

**PRODUCT OVERVIEW**

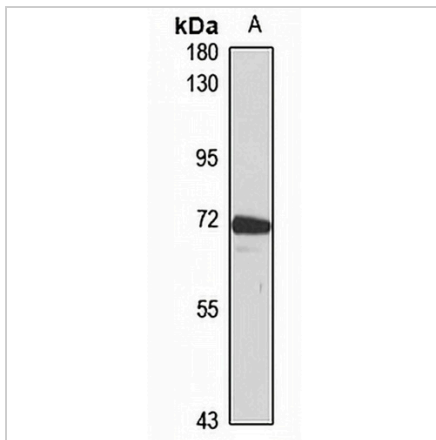
Description	Rabbit polyclonal antibody to EML2
Specificity	Recognizes endogenous levels of EML2 protein
Antibody Type	Primary antibody
Immunogen	Recombinant fusion protein of human EML2. The exact sequence is proprietary.
Purification	The antibody was purified by immunogen affinity chromatography.
Molecular Weight	Predicted: 70; Observed: 71 kD
Form/Buffer	Liquid in 0.42% Potassium phosphate, 0.87% Sodium chloride, pH 7.3, 30% glycerol, and 0.01% sodium azide.
Alternative Names	EMAP2; EMAPL2; Echinoderm microtubule-associated protein-like 2; EMAP-2; HuEMAP-2
Gene Symbol	EML2
Entrez Gene	24139(Human); 72205(Mouse); 192360(Rat)
SwissProt	O95834(Human); Q7TNG5(Mouse); Q6P6T4(Rat)

\*AREX continuously optimizes our products. Webpage content may not reflect the latest updates. For inquiries, please contact [info@arexbio.com](mailto:info@arexbio.com) or your local distributor.

\*Clone Number, Reactivity, Source/Host and Clonality can be found in the product name and Key Features section above.

**DATASHEET****EML2 Rabbit Polyclonal Antibody**

CAT. NO. APA15547

**DATA**

Western blot analysis of EML2 expression in mouse kidney (A) whole cell lysates.  
(Predicted band size: 70; 86; 92 kD; Observed band size: 71 kD)

**STORAGE**

Store at 4°C short term. For long term storage, store at -20°C, avoiding freeze/thaw cycles.

**NOTE**

For Research Use Only. Not for diagnostic, therapeutics, prophylactic or in vivo use.