

DATASHEET

ENC1 Rabbit Polyclonal Antibody

CAT. NO. APA15548

KEY FEATURES

Target	ENC1	Source / Host	Rabbit
Reactivity	Human, Mouse, Rat	Clonality	Polyclonal
Applications	WB	Conjugation	Unconjugated
Form / Buffer	Liquid in 0.42% Potassium phosphate, 0.87% Sodium chloride, pH 7.3, 30% glycerol, and 0.01% sodium azide.		Storage at -20°C

BACKGROUND

Actin-binding protein involved in the regulation of neuronal process formation and in differentiation of neural crest cells. Down-regulates transcription factor NF2L2/NRF2 by decreasing the rate of protein synthesis and not via a ubiquitin-mediated proteasomal degradation mechanism.

APPLICATION

To ensure optimal assay performance, AREX recommends conducting reagent titration tailored to each testing system for optimal detection results.

WB	1:500 - 1:2000
----	----------------

*Results are sample-specific. Please refer to your local assay conditions and test parameters for reference.

PRODUCT OVERVIEW

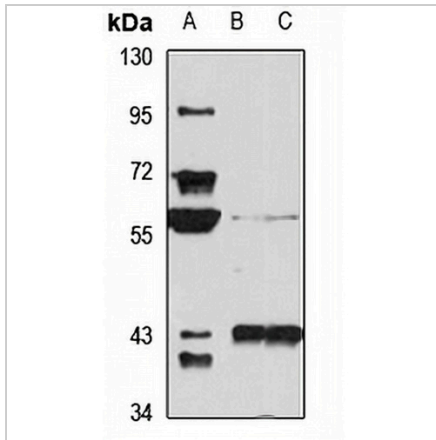
Description	Rabbit polyclonal antibody to ENC1
Specificity	Recognizes endogenous levels of ENC1 protein
Antibody Type	Primary antibody
Immunogen	Recombinant fusion protein of human ENC1. The exact sequence is proprietary.
Purification	The antibody was purified by immunogen affinity chromatography.
Molecular Weight	Predicted: 57; Observed: 66 kD
Form/Buffer	Liquid in 0.42% Potassium phosphate, 0.87% Sodium chloride, pH 7.3, 30% glycerol, and 0.01% sodium azide.
Alternative Names	KLHL37; NRPB; PIG10; Ectoderm-neural cortex protein 1; ENC-1; Kelch-like protein 37; Nuclear matrix protein NRP/B; p53-induced gene 10 protein
Gene Symbol	ENC1
Entrez Gene	8507(Human); 13803(Mouse)
SwissProt	O14682(Human); O35709(Mouse)

*AREX continuously optimizes our products. Webpage content may not reflect the latest updates. For inquiries, please contact info@arexbio.com or your local distributor.

*Clone Number, Reactivity, Source/Host and Clonality can be found in the product name and Key Features section above.

DATASHEET**ENC1 Rabbit Polyclonal Antibody**

CAT. NO. APA15548

DATA

Western blot analysis of ENC1 expression in SW480 (A), mouse brain (B), rat brain (C) whole cell lysates. (Predicted band size: 57; 66 kD; Observed band size: 66 kD)

STORAGE

Store at 4°C short term. For long term storage, store at -20°C, avoiding freeze/thaw cycles.

NOTE

For Research Use Only. Not for diagnostic, therapeutics, prophylactic or in vivo use.