

## DATASHEET

# ENPP6 Rabbit Polyclonal Antibody

CAT. NO. APA15551

### KEY FEATURES

Target	ENPP6	Source / Host	Rabbit
Reactivity	Human, Mouse	Clonality	Polyclonal
Applications	WB	Conjugation	Unconjugated
Form / Buffer	Liquid in 0.42% Potassium phosphate, 0.87% Sodium chloride, pH 7.3, 30% glycerol, and 0.01% sodium azide.		Storage at -20°C

### BACKGROUND

Choline-specific glycerophosphodiesterase that hydrolyzes glycerophosphocholine (GPC) and lysophosphatidylcholine (LPC) and contributes to supplying choline to the cells and lysophosphatidylcholine (LPC) and contributes to supplying choline to the cells. Has a preference for LPC with short (12:0 and 14:0) or polyunsaturated (18:2 and 20:4) fatty acids. In vitro, hydrolyzes only choline-containing lysophospholipids, such as sphingosylphosphorylcholine (SPC), platelet-activating factor (PAF) and lysoPAF, but not other lysophospholipids.

### APPLICATION

To ensure optimal assay performance, AREX recommends conducting reagent titration tailored to each testing system for optimal detection results.

WB	1:500 - 1:2000
----	----------------

\*Results are sample-specific. Please refer to your local assay conditions and test parameters for reference.

### PRODUCT OVERVIEW

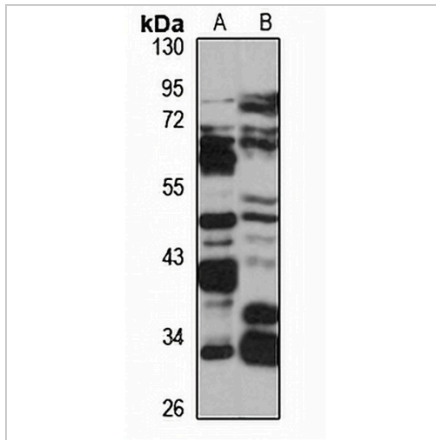
Description	Rabbit polyclonal antibody to ENPP6
Specificity	Recognizes endogenous levels of ENPP6 protein
Antibody Type	Primary antibody
Immunogen	Recombinant fusion protein of human ENPP6. The exact sequence is proprietary.
Purification	The antibody was purified by immunogen affinity chromatography.
Molecular Weight	Predicted: 50 kD; Observed: 50 kD
Form/Buffer	Liquid in 0.42% Potassium phosphate, 0.87% Sodium chloride, pH 7.3, 30% glycerol, and 0.01% sodium azide.
Alternative Names	Ectonucleotide pyrophosphatase/phosphodiesterase family member 6; E-NPP 6; NPP-6; Choline-specific glycerophosphodiester phosphodiesterase; Glycerophosphocholine cholinephosphodiesterase; GPC-Cpde
Gene Symbol	ENPP6
Entrez Gene	133121(Human); 320981(Mouse)
SwissProt	Q6UWR7(Human); Q8BGN3(Mouse)

\*AREX continuously optimizes our products. Webpage content may not reflect the latest updates. For inquiries, please contact [info@arex.bio](mailto:info@arex.bio) or your local distributor.

\*Clone Number, Reactivity, Source/Host and Clonality can be found in the product name and Key Features section above.

**DATASHEET****ENPP6 Rabbit Polyclonal Antibody**

CAT. NO. APA15551

**DATA**

Western blot analysis of ENPP6 expression in HEK293T (A), mouse brain (B) whole cell lysates. (Predicted band size: 50 kD; Observed band size: 50 kD)

**STORAGE**

Store at 4°C short term. For long term storage, store at -20°C, avoiding freeze/thaw cycles.

**NOTE**

For Research Use Only. Not for diagnostic, therapeutics, prophylactic or in vivo use.