

DATASHEET

CD39L3 Rabbit Polyclonal Antibody

CAT. NO. APA15552

KEY FEATURES

Target	CD39L3	Source / Host	Rabbit
Reactivity	Human, Mouse, Rat	Clonality	Polyclonal
Applications	WB	Conjugation	Unconjugated
Form / Buffer	Liquid in 0.42% Potassium phosphate, 0.87% Sodium chloride, pH 7.3, 30% glycerol, and 0.01% sodium azide.		Storage at -20°C

BACKGROUND

Catalyzes the hydrolysis of nucleoside triphosphates (NTPs) and diphosphates (NDPs) and diphosphates (NDPs) . The enzyme sequentially removes phosphate groups in two successive steps, converting NTPs to nucleoside monophosphates (NMPs) via NDP intermediates . This activity contributes to the regulation of extracellular levels of nucleotides . Has a preference for the hydrolysis of ATP . Does not hydrolyzes AMP .

APPLICATION

To ensure optimal assay performance, AREX recommends conducting reagent titration tailored to each testing system for optimal detection results.

WB	1:500 - 1:2000
----	----------------

*Results are sample-specific. Please refer to your local assay conditions and test parameters for reference.

PRODUCT OVERVIEW

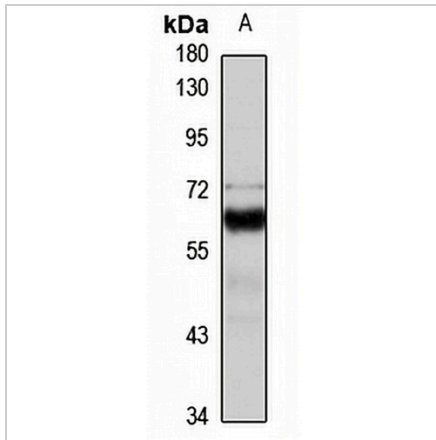
Description	Rabbit polyclonal antibody to CD39L3
Specificity	Recognizes endogenous levels of CD39L3 protein
Antibody Type	Primary antibody
Immunogen	Recombinant fusion protein of human CD39L3. The exact sequence is proprietary.
Purification	The antibody was purified by immunogen affinity chromatography.
Molecular Weight	Predicted: 50; Observed: 59 kD
Form/Buffer	Liquid in 0.42% Potassium phosphate, 0.87% Sodium chloride, pH 7.3, 30% glycerol, and 0.01% sodium azide.
Alternative Names	CD39L3; Ectonucleoside triphosphate diphosphohydrolase 3; NTPDase 3; CD39 antigen-like 3; Ecto-ATP diphosphohydrolase 3; Ecto-ATPDase 3; Ecto-ATPase 3; Ecto-apyrase 3; HB6
Gene Symbol	ENTPD3
Entrez Gene	956(Human)
SwissProt	O75355(Human)

*AREX continuously optimizes our products. Webpage content may not reflect the latest updates. For inquiries, please contact info@arexbio.com or your local distributor.

*Clone Number, Reactivity, Source/Host and Clonality can be found in the product name and Key Features section above.

DATASHEET**CD39L3 Rabbit Polyclonal Antibody**

CAT. NO. APA15552

DATA

Western blot analysis of CD39L3 expression in mouse lung (A) whole cell lysates.
(Predicted band size: 50; 59 kD; Observed band size: 59 kD)

STORAGE

Store at 4°C short term. For long term storage, store at -20°C, avoiding freeze/thaw cycles.

NOTE

For Research Use Only. Not for diagnostic, therapeutics, prophylactic or in vivo use.