

## DATASHEET

# EPB41L3 Rabbit Polyclonal Antibody

CAT. NO. APA15556

### KEY FEATURES

Target	EPB41L3	Source / Host	Rabbit
Reactivity	Human, Mouse	Clonality	Polyclonal
Applications	WB	Conjugation	Unconjugated
Form / Buffer	Liquid in 0.42% Potassium phosphate, 0.87% Sodium chloride, pH 7.3, 30% glycerol, and 0.01% sodium azide.		Storage at -20°C

### BACKGROUND

Tumor suppressor that inhibits cell proliferation and promotes apoptosis. Modulates the activity of protein arginine N-methyltransferases, including PRMT3 and PRMT5.

### APPLICATION

To ensure optimal assay performance, AREX recommends conducting reagent titration tailored to each testing system for optimal detection results.

WB	1:500 - 1:2000
----	----------------

\*Results are sample-specific. Please refer to your local assay conditions and test parameters for reference.

### PRODUCT OVERVIEW

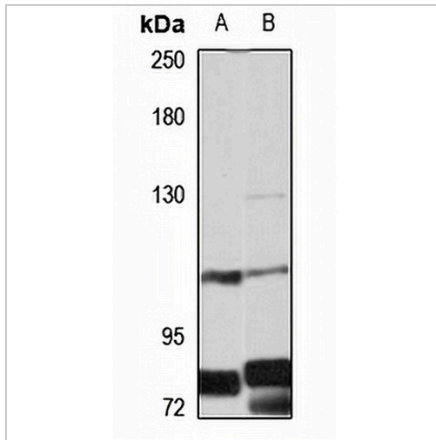
Description	Rabbit polyclonal antibody to EPB41L3
Specificity	Recognizes endogenous levels of EPB41L3 protein
Antibody Type	Primary antibody
Immunogen	Recombinant fusion protein of human EPB41L3. The exact sequence is proprietary.
Purification	The antibody was purified by immunogen affinity chromatography.
Molecular Weight	Predicted: 69; Observed: 121 kD
Form/Buffer	Liquid in 0.42% Potassium phosphate, 0.87% Sodium chloride, pH 7.3, 30% glycerol, and 0.01% sodium azide.
Alternative Names	DAL1; KIAA0987; Band 4.1-like protein 3; 4.1B; Differentially expressed in adenocarcinoma of the lung protein 1; DAL-1
Gene Symbol	EPB41L3
Entrez Gene	23136(Human); 13823(Mouse)
SwissProt	Q9Y2J2(Human); Q9WV92(Mouse)

\*AREX continuously optimizes our products. Webpage content may not reflect the latest updates. For inquiries, please contact [info@arexbio.com](mailto:info@arexbio.com) or your local distributor.

\*Clone Number, Reactivity, Source/Host and Clonality can be found in the product name and Key Features section above.

**DATASHEET****EPB41L3 Rabbit Polyclonal Antibody**

CAT. NO. APA15556

**DATA**

Western blot analysis of EPB41L3 expression in U87MG (A), mouse kidney (B) whole cell lysates. (Predicted band size: 69; 96; 98; 120 kD; Observed band size: 121 kD)

**STORAGE**

Store at 4°C short term. For long term storage, store at -20°C, avoiding freeze/thaw cycles.

**NOTE**

For Research Use Only. Not for diagnostic, therapeutics, prophylactic or in vivo use.