

DATASHEET

EPN1 Rabbit Polyclonal Antibody

CAT. NO. APA15557

KEY FEATURES

Target	EPN1	Source / Host	Rabbit
Reactivity	Human, Mouse, Rat	Clonality	Polyclonal
Applications	WB, IHC	Conjugation	Unconjugated
Form / Buffer	Liquid in 0.42% Potassium phosphate, 0.87% Sodium chloride, pH 7.3, 30% glycerol, and 0.01% sodium azide.		Storage at -20°C

BACKGROUND

Binds to membranes enriched in phosphatidylinositol 4,5-bisphosphate (PtdIns(4,5)P₂). Modifies membrane curvature and facilitates the formation of clathrin-coated invaginations . Regulates receptor-mediated endocytosis P2). Modifies membrane curvature and facilitates the formation of clathrin-coated invaginations . Regulates receptor-mediated endocytosis .

APPLICATION

To ensure optimal assay performance, AREX recommends conducting reagent titration tailored to each testing system for optimal detection results.

WB	1:500 - 1:2000
IHC	1:50 - 1:200

*Results are sample-specific. Please refer to your local assay conditions and test parameters for reference.

PRODUCT OVERVIEW

Description	Rabbit polyclonal antibody to EPN1
Specificity	Recognizes endogenous levels of EPN1 protein
Antibody Type	Primary antibody
Immunogen	Recombinant fusion protein of human EPN1. The exact sequence is proprietary.
Purification	The antibody was purified by immunogen affinity chromatography.
Molecular Weight	Predicted: 60 kD; Observed: 94 kD
Form/Buffer	Liquid in 0.42% Potassium phosphate, 0.87% Sodium chloride, pH 7.3, 30% glycerol, and 0.01% sodium azide.
Alternative Names	Epsin-1; EH domain-binding mitotic phosphoprotein; EPS-15-interacting protein 1
Gene Symbol	EPN1
Entrez Gene	29924(Human); 13854(Mouse); 117277(Rat)
SwissProt	Q9Y6I3(Human); Q80VP1(Mouse); O88339(Rat)

*AREX continuously optimizes our products. Webpage content may not reflect the latest updates. For inquiries, please contact info@arexbio.com or your local distributor.

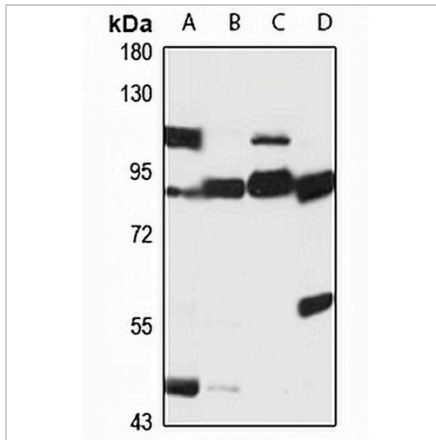
*Clone Number, Reactivity, Source/Host and Clonality can be found in the product name and Key Features section above.

DATASHEET

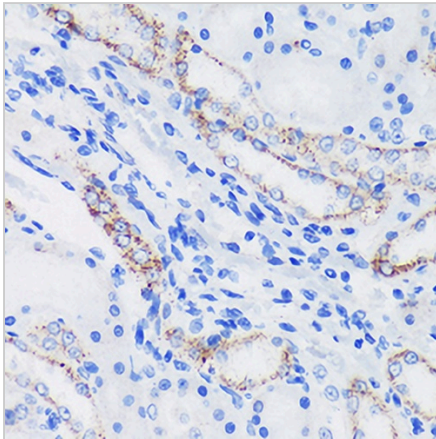
EPN1 Rabbit Polyclonal Antibody

CAT. NO. APA15557

DATA



Western blot analysis of EPN1 expression in U87MG (A), mouse lung (B), mouse liver (C), rat brain (D) whole cell lysates. (Predicted band size: 60 kD; Observed band size: 94 kD)



Immunohistochemical analysis of EPN1 staining in rat kidney formalin fixed paraffin embedded tissue section. The section was pre-treated using heat mediated antigen retrieval with sodium citrate buffer (pH 6.0). The section was then incubated with the antibody at room temperature and detected using an HRP conjugated compact polymer system. DAB was used as the chromogen. The section was then counterstained with haematoxylin and mounted with DPX.

STORAGE

Store at 4°C short term. For long term storage, store at -20°C, avoiding freeze/thaw cycles.

NOTE

For Research Use Only. Not for diagnostic, therapeutics, prophylactic or in vivo use.