

DATASHEET

PARS Rabbit Polyclonal Antibody

CAT. NO. APA15558

KEY FEATURES

Target	PARS	Source / Host	Rabbit
Reactivity	Human	Clonality	Polyclonal
Applications	WB, IHC	Conjugation	Unconjugated
Form / Buffer	Liquid in 0.42% Potassium phosphate, 0.87% Sodium chloride, pH 7.3, 30% glycerol, and 0.01% sodium azide.		Storage at -20°C

BACKGROUND

Multifunctional protein which primarily functions within the aminoacyl-tRNA synthetase multi-enzyme complex, also known as multisynthetase complex. Within the complex it catalyzes the attachment of both L-glutamate and L-proline to their cognate tRNAs in a two-step reaction where the amino acid is first activated by ATP to form a covalent intermediate with AMP. Subsequently, the activated amino acid is transferred to the acceptor end of the cognate tRNA to form L-glutamyl-tRNA(Glu) and L-prolyl-tRNA(Pro) and L-prolyl-tRNA(Pro). Upon interferon-gamma stimulation, EPRS1 undergoes phosphorylation, causing its dissociation from the aminoacyl-tRNA synthetase multi-enzyme complex.

APPLICATION

To ensure optimal assay performance, AREX recommends conducting reagent titration tailored to each testing system for optimal detection results.

WB	1:500 - 1:2000
IHC	1:50 - 1:200

*Results are sample-specific. Please refer to your local assay conditions and test parameters for reference.

PRODUCT OVERVIEW

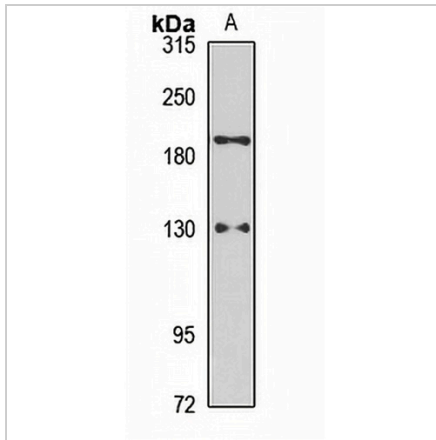
Description	Rabbit polyclonal antibody to PARS
Specificity	Recognizes endogenous levels of PARS protein
Antibody Type	Primary antibody
Immunogen	KLH-conjugated synthetic peptide of human PARS. The exact sequence is proprietary.
Purification	The antibody was purified by immunogen affinity chromatography.
Molecular Weight	Predicted: 170 kD; Observed: 190 kD
Form/Buffer	Liquid in 0.42% Potassium phosphate, 0.87% Sodium chloride, pH 7.3, 30% glycerol, and 0.01% sodium azide.
Alternative Names	GLNS; PARS; QARS; QPRS; Bifunctional glutamate/proline--tRNA ligase; Bifunctional aminoacyl-tRNA synthetase; Cell proliferation-inducing gene 32 protein; Glutamyl-prolyl-tRNA synthetase
Gene Symbol	EPRS
Entrez Gene	2058(Human)
SwissProt	P07814(Human)

*AREX continuously optimizes our products. Webpage content may not reflect the latest updates. For inquiries, please contact info@arexbio.com or your local distributor.

*Clone Number, Reactivity, Source/Host and Clonality can be found in the product name and Key Features section above.

DATASHEET**PARS Rabbit Polyclonal Antibody**

CAT. NO. APA15558

DATA

Western blot analysis of PARS expression in HeLa (A) whole cell lysates. (Predicted band size: 170 kD; Observed band size: 190 kD)

STORAGE

Store at 4°C short term. For long term storage, store at -20°C, avoiding freeze/thaw cycles.

NOTE

For Research Use Only. Not for diagnostic, therapeutics, prophylactic or in vivo use.