

DATASHEET

ERC1 Rabbit Polyclonal Antibody

CAT. NO. APA15561

KEY FEATURES

Target	ERC1	Source / Host	Rabbit
Reactivity	Human, Mouse, Rat	Clonality	Polyclonal
Applications	WB	Conjugation	Unconjugated
Form / Buffer	Liquid in 0.42% Potassium phosphate, 0.87% Sodium chloride, pH 7.3, 30% glycerol, and 0.01% sodium azide.		Storage at-20°C

BACKGROUND

Regulatory subunit of the IKK complex. Probably recruits IkappaBalpha/NFKBIA to the complex. May be involved in the organization of the cytomatrix at the nerve terminals active zone (CAZ) which regulates neurotransmitter release. May be involved in vesicle trafficking at the CAZ. May be involved in Rab-6 regulated endosomes to Golgi transport.

APPLICATION

To ensure optimal assay performance, AREX recommends conducting reagent titration tailored to each testing system for optimal detection results.

WB	1:500 - 1:2000
----	----------------

*Results are sample-specific. Please refer to your local assay conditions and test parameters for reference.

PRODUCT OVERVIEW

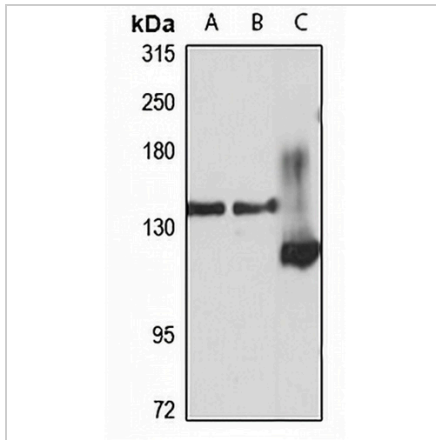
Description	Rabbit polyclonal antibody to ERC1
Specificity	Recognizes endogenous levels of ERC1 protein
Antibody Type	Primary antibody
Immunogen	Recombinant fusion protein of human ERC1. The exact sequence is proprietary.
Purification	The antibody was purified by immunogen affinity chromatography.
Molecular Weight	Predicted: 81; Observed: 130 120 kD
Form/Buffer	Liquid in 0.42% Potassium phosphate, 0.87% Sodium chloride, pH 7.3, 30% glycerol, and 0.01% sodium azide.
Alternative Names	ELKS; KIAA1081; RAB6IP2; ELKS/Rab6-interacting/CAST family member 1; ERC-1; Rab6-interacting protein 2
Gene Symbol	ERC1
Entrez Gene	23085(Human); 111173(Mouse); 266806(Rat)
SwissProt	Q8IUD2(Human); Q99MI1(Mouse); Q811U3(Rat)

*AREX continuously optimizes our products. Webpage content may not reflect the latest updates. For inquiries, please contact info@arexbio.com or your local distributor.

*Clone Number, Reactivity, Source/Host and Clonality can be found in the product name and Key Features section above.

DATASHEET**ERC1 Rabbit Polyclonal Antibody**

CAT. NO. APA15561

DATA

Western blot analysis of ERC1 expression in Jurkat (A), NIH3T3 (B), rat brain (C) whole cell lysates. (Predicted band size: 81; 108; 113; 124; 128 kD; Observed band size: 130 120 kD)

STORAGE

Store at 4°C short term. For long term storage, store at -20°C, avoiding freeze/thaw cycles.

NOTE

For Research Use Only. Not for diagnostic, therapeutics, prophylactic or in vivo use.