

DATASHEET

ERCC6L2 Rabbit Polyclonal Antibody

CAT. NO. APA15563

KEY FEATURES

Target	ERCC6L2	Source / Host	Rabbit
Reactivity	Human, Mouse	Clonality	Polyclonal
Applications	WB	Conjugation	Unconjugated
Form / Buffer	Liquid in 0.42% Potassium phosphate, 0.87% Sodium chloride, pH 7.3, 30% glycerol, and 0.01% sodium azide.		Storage at -20°C

BACKGROUND

Promotes double-strand break (DSB) end-joining and facilitates programmed recombination by controlling how DNA ends are joined in a spatially oriented manner during repair . Also plays a role in DNA repair by restricting DNA end resection in double strand break (DSB) repair end-joining and facilitates programmed recombination by controlling how DNA ends are joined in a spatially oriented manner during repair . Also plays a role in DNA repair by restricting DNA end resection in double strand break (DSB) repair . Facilitates replication of complex DNA regions and regulates the maintenance of chromatin structure .

APPLICATION

To ensure optimal assay performance, AREX recommends conducting reagent titration tailored to each testing system for optimal detection results.

WB	1:500 - 1:2000
----	----------------

*Results are sample-specific. Please refer to your local assay conditions and test parameters for reference.

PRODUCT OVERVIEW

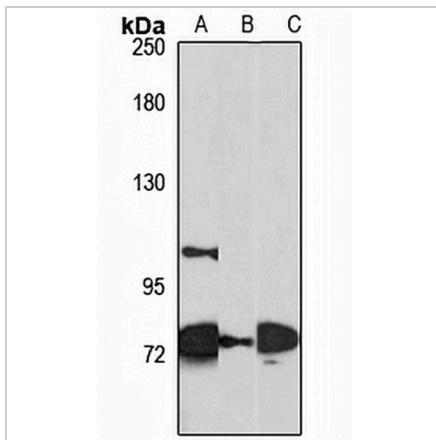
Description	Rabbit polyclonal antibody to ERCC6L2
Specificity	Recognizes endogenous levels of ERCC6L2 protein
Antibody Type	Primary antibody
Immunogen	Recombinant fusion protein of human ERCC6L2. The exact sequence is proprietary.
Purification	The antibody was purified by immunogen affinity chromatography.
Molecular Weight	Predicted: 60; Observed: 81 kD
Form/Buffer	Liquid in 0.42% Potassium phosphate, 0.87% Sodium chloride, pH 7.3, 30% glycerol, and 0.01% sodium azide.
Alternative Names	C9orf102; RAD26L; DNA excision repair protein ERCC-6-like 2; DNA repair and recombination protein RAD26-like
Gene Symbol	ERCC6L2
Entrez Gene	375748(Human); 76251(Mouse)
SwissProt	Q5T890(Human); Q9JIM3(Mouse)

*AREX continuously optimizes our products. Webpage content may not reflect the latest updates. For inquiries, please contact info@arexbio.com or your local distributor.

*Clone Number, Reactivity, Source/Host and Clonality can be found in the product name and Key Features section above.

DATASHEET**ERCC6L2 Rabbit Polyclonal Antibody**

CAT. NO. APA15563

DATA

Western blot analysis of ERCC6L2 expression in HeLa (A), MCF7 (B), mouse kidney (C) whole cell lysates. (Predicted band size: 60; 81; 177 kD; Observed band size: 81 kD)

STORAGE

Store at 4°C short term. For long term storage, store at -20°C, avoiding freeze/thaw cycles.

NOTE

For Research Use Only. Not for diagnostic, therapeutics, prophylactic or in vivo use.