

**DATASHEET**

**SPFH2 Rabbit Polyclonal Antibody**

CAT. NO. APA15565

**KEY FEATURES**

Target	SPFH2	Source / Host	Rabbit
Reactivity	Human, Mouse	Clonality	Polyclonal
Applications	WB	Conjugation	Unconjugated
Form / Buffer	Liquid in 0.42% Potassium phosphate, 0.87% Sodium chloride, pH 7.3, 30% glycerol, and 0.01% sodium azide.		Storage at -20°C

**BACKGROUND**

Component of the ERLIN1/ERLIN2 complex which mediates the endoplasmic reticulum-associated degradation (ERAD) of inositol 1,4,5-trisphosphate receptors (IP3Rs) such as ITPR1 of inositol 1,4,5-trisphosphate receptors (IP3Rs) such as ITPR1 . Promotes sterol-accelerated ERAD of HMGCR probably implicating an AMFR/gp78-containing ubiquitin ligase complex . Involved in regulation of cellular cholesterol homeostasis by regulation the SREBP signaling pathway. May promote ER retention of the SCAP-SREBF complex .

**APPLICATION**

To ensure optimal assay performance, AREX recommends conducting reagent titration tailored to each testing system for optimal detection results.

WB	1:500 - 1:2000
----	----------------

\*Results are sample-specific. Please refer to your local assay conditions and test parameters for reference.

**PRODUCT OVERVIEW**

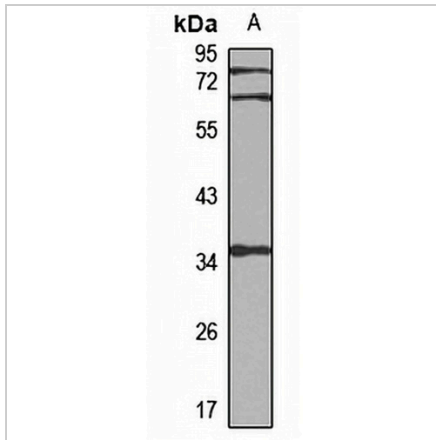
Description	Rabbit polyclonal antibody to SPFH2
Specificity	Recognizes endogenous levels of SPFH2 protein
Antibody Type	Primary antibody
Immunogen	Recombinant fusion protein of human SPFH2. The exact sequence is proprietary.
Purification	The antibody was purified by immunogen affinity chromatography.
Molecular Weight	Predicted: 16; Observed: 38 kD
Form/Buffer	Liquid in 0.42% Potassium phosphate, 0.87% Sodium chloride, pH 7.3, 30% glycerol, and 0.01% sodium azide.
Alternative Names	C8orf2; SPFH2; Erlin-2; Endoplasmic reticulum lipid raft-associated protein 2; Stomatin-prohibitin-flotillin-HflC/K domain-containing protein 2; SPFH domain-containing protein 2
Gene Symbol	ERLIN2
Entrez Gene	11160(Human); 244373(Mouse)
SwissProt	O94905(Human); Q8BFZ9(Mouse)

\*AREX continuously optimizes our products. Webpage content may not reflect the latest updates. For inquiries, please contact [info@arexbio.com](mailto:info@arexbio.com) or your local distributor.

\*Clone Number, Reactivity, Source/Host and Clonality can be found in the product name and Key Features section above.

**DATASHEET****SPFH2 Rabbit Polyclonal Antibody**

CAT. NO. APA15565

**DATA**

Western blot analysis of SPFH2 expression in U251MG (A) whole cell lysates. (Predicted band size: 16; 22; 37 kD; Observed band size: 38 kD)

**STORAGE**

Store at 4°C short term. For long term storage, store at -20°C, avoiding freeze/thaw cycles.

**NOTE**

For Research Use Only. Not for diagnostic, therapeutics, prophylactic or in vivo use.