

DATASHEET

ERMAP Rabbit Polyclonal Antibody

CAT. NO. APA15566

KEY FEATURES

Target	ERMAP	Source / Host	Rabbit
Reactivity	Human, Mouse	Clonality	Polyclonal
Applications	WB	Conjugation	Unconjugated
Form / Buffer	Liquid in 0.42% Potassium phosphate, 0.87% Sodium chloride, pH 7.3, 30% glycerol, and 0.01% sodium azide.		Storage at -20°C

BACKGROUND

Possible role as a cell-adhesion or receptor molecule of erythroid cells.

APPLICATION

To ensure optimal assay performance, AREX recommends conducting reagent titration tailored to each testing system for optimal detection results.

WB	1:500 - 1:2000
----	----------------

*Results are sample-specific. Please refer to your local assay conditions and test parameters for reference.

PRODUCT OVERVIEW

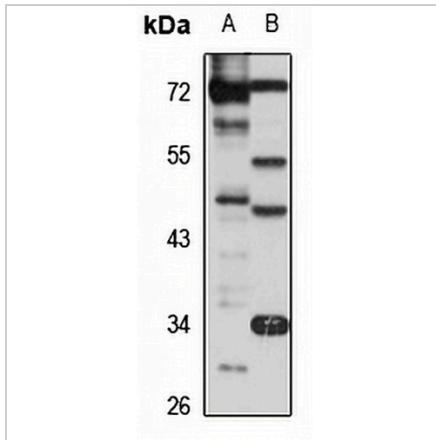
Description	Rabbit polyclonal antibody to ERMAP
Specificity	Recognizes endogenous levels of ERMAP protein
Antibody Type	Primary antibody
Immunogen	Recombinant fusion protein of human ERMAP. The exact sequence is proprietary.
Purification	The antibody was purified by immunogen affinity chromatography.
Molecular Weight	Predicted: 52 kD; Observed: 53 kD
Form/Buffer	Liquid in 0.42% Potassium phosphate, 0.87% Sodium chloride, pH 7.3, 30% glycerol, and 0.01% sodium azide.
Alternative Names	RD; SC; Erythroid membrane-associated protein; hERMAP; Radin blood group antigen; Scianna blood group antigen
Gene Symbol	ERMAP
Entrez Gene	114625(Human); 27028(Mouse)
SwissProt	Q96PL5(Human); Q9JLN5(Mouse)

*AREX continuously optimizes our products. Webpage content may not reflect the latest updates. For inquiries, please contact info@arexbio.com or your local distributor.

*Clone Number, Reactivity, Source/Host and Clonality can be found in the product name and Key Features section above.

DATASHEET**ERMAP Rabbit Polyclonal Antibody**

CAT. NO. APA15566

DATA

Western blot analysis of ERMAP expression in K562 (A), mouse liver (B) whole cell lysates.
(Predicted band size: 52 kD; Observed band size: 53 kD)

STORAGE

Store at 4°C short term. For long term storage, store at -20°C, avoiding freeze/thaw cycles.

NOTE

For Research Use Only. Not for diagnostic, therapeutics, prophylactic or in vivo use.