

DATASHEET

ERVW-1 Rabbit Polyclonal Antibody

CAT. NO. APA15569

KEY FEATURES

| | | | |
|---------------|---|---------------|---------------------|
| Target | ERVW-1 | Source / Host | Rabbit |
| Reactivity | Human, Mouse | Clonality | Polyclonal |
| Applications | WB | Conjugation | Unconjugated |
| Form / Buffer | Liquid in 0.42% Potassium phosphate, 0.87% Sodium chloride, pH 7.3, 30% glycerol, and 0.01% sodium azide. | | Storage at -20°C |

BACKGROUND

This endogenous retroviral envelope protein has retained its original fusogenic properties and participates in trophoblast fusion and the formation of a syncytium during placenta morphogenesis. May induce fusion through binding of SLC1A4 and SLC1A5.

APPLICATION

To ensure optimal assay performance, AREX recommends conducting reagent titration tailored to each testing system for optimal detection results.

| | |
|----|----------------|
| WB | 1:500 - 1:2000 |
|----|----------------|

*Results are sample-specific. Please refer to your local assay conditions and test parameters for reference.

PRODUCT OVERVIEW

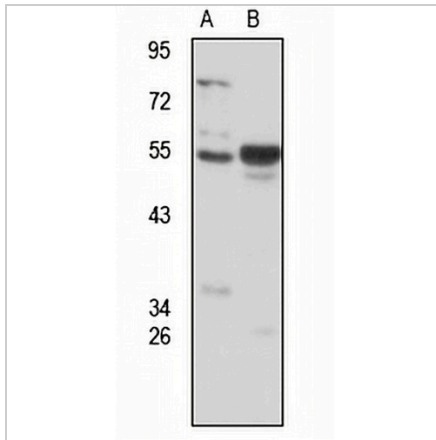
| | |
|-------------------|---|
| Description | Rabbit polyclonal antibody to ERVW-1 |
| Specificity | Recognizes endogenous levels of ERVW-1 protein |
| Antibody Type | Primary antibody |
| Immunogen | KLH-conjugated synthetic peptide of human ERVW-1. The exact sequence is proprietary. |
| Purification | The antibody was purified by immunogen affinity chromatography. |
| Molecular Weight | Predicted: 59 kD; Observed: 55 kD |
| Form/Buffer | Liquid in 0.42% Potassium phosphate, 0.87% Sodium chloride, pH 7.3, 30% glycerol, and 0.01% sodium azide. |
| Alternative Names | ERVWE1; HERV-W_7q21.2 provirus ancestral Env polyprotein; Endogenous retrovirus group W member 1; Env-W; Envelope polyprotein gPr73; Enverin; HERV-7q Envelope protein; HERV-W envelope protein; Syncytin; Syncytin-1 |
| Gene Symbol | ERVW-1 |
| Entrez Gene | 30816(Human) |
| SwissProt | Q9UQF0(Human) |

*AREX continuously optimizes our products. Webpage content may not reflect the latest updates. For inquiries, please contact info@arexbio.com or your local distributor.

*Clone Number, Reactivity, Source/Host and Clonality can be found in the product name and Key Features section above.

DATASHEET**ERVW-1 Rabbit Polyclonal Antibody**

CAT. NO. APA15569

DATA

Western blot analysis of ERVW-1 expression in HEK293T (A), mouse brain (B) whole cell lysates. (Predicted band size: 59 kD; Observed band size: 55 kD)

STORAGE

Store at 4°C short term. For long term storage, store at -20°C, avoiding freeze/thaw cycles.

NOTE

For Research Use Only. Not for diagnostic, therapeutics, prophylactic or in vivo use.