

## DATASHEET

# ERR beta Rabbit Polyclonal Antibody

CAT. NO. APA15571

### KEY FEATURES

Target	ERR beta	Source / Host	Rabbit
Reactivity	Human, Mouse, Rat	Clonality	Polyclonal
Applications	WB	Conjugation	Unconjugated
Form / Buffer	Liquid in 0.42% Potassium phosphate, 0.87% Sodium chloride, pH 7.3, 30% glycerol, and 0.01% sodium azide.		Storage at -20°C

### BACKGROUND

Transcription factor that binds a canonical ESRRB recognition (ERRE) sequence 5'TCAAGGTCA-3' localized on promoter and enhancer of targets genes regulating their expression or their transcription activity sequence 5'TCAAGGTCA-3' localized on promoter and enhancer of targets genes regulating their expression or their transcription activity . Plays a role, in a LIF-independent manner, in maintenance of self-renewal and pluripotency of embryonic and trophoblast stem cells through different signaling pathways including FGF signaling pathway and Wnt signaling pathways. Involved in morula development (2-16 cells embryos) by acting as a regulator at the 8-cell stage .

### APPLICATION

To ensure optimal assay performance, AREX recommends conducting reagent titration tailored to each testing system for optimal detection results.

WB	1:500 - 1:2000
----	----------------

\*Results are sample-specific. Please refer to your local assay conditions and test parameters for reference.

### PRODUCT OVERVIEW

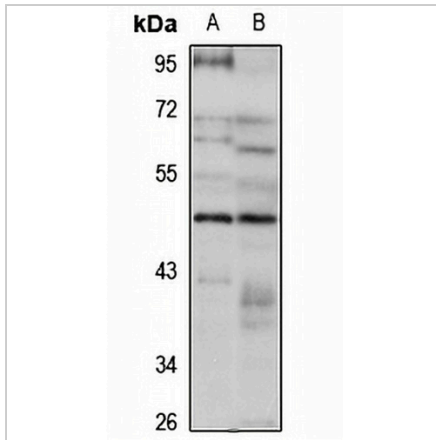
Description	Rabbit polyclonal antibody to ERR beta
Specificity	Recognizes endogenous levels of ERR beta protein
Antibody Type	Primary antibody
Immunogen	KLH-conjugated synthetic peptide of human ERR beta. The exact sequence is proprietary.
Purification	The antibody was purified by immunogen affinity chromatography.
Molecular Weight	Predicted: 48; Observed: 50 kD
Form/Buffer	Liquid in 0.42% Potassium phosphate, 0.87% Sodium chloride, pH 7.3, 30% glycerol, and 0.01% sodium azide.
Alternative Names	ERRB2; ESRL2; NR3B2; Steroid hormone receptor ERR2; ERR beta-2; Estrogen receptor-like 2; Estrogen-related receptor beta; ERR-beta; Nuclear receptor subfamily 3 group B member 2
Gene Symbol	ESRRB
Entrez Gene	2103(Human); 26380(Mouse); 299210(Rat)
SwissProt	O95718(Human); Q61539(Mouse); P11475(Rat)

\*AREX continuously optimizes our products. Webpage content may not reflect the latest updates. For inquiries, please contact [info@arexbio.com](mailto:info@arexbio.com) or your local distributor.

\*Clone Number, Reactivity, Source/Host and Clonality can be found in the product name and Key Features section above.

**DATASHEET****ERR beta Rabbit Polyclonal Antibody**

CAT. NO. APA15571

**DATA**

Western blot analysis of ERR beta expression in mouse brain (A), rat brain (B) whole cell lysates. (Predicted band size: 48; 55; 56 kD; Observed band size: 50 kD)

**STORAGE**

Store at 4°C short term. For long term storage, store at -20°C, avoiding freeze/thaw cycles.

**NOTE**

For Research Use Only. Not for diagnostic, therapeutics, prophylactic or in vivo use.