

DATASHEET

E-Syt2 Rabbit Polyclonal Antibody

CAT. NO. APA15574

KEY FEATURES

Target	E-Syt2	Source / Host	Rabbit
Reactivity	Human, Mouse	Clonality	Polyclonal
Applications	WB	Conjugation	Unconjugated
Form / Buffer	Liquid in 0.42% Potassium phosphate, 0.87% Sodium chloride, pH 7.3, 30% glycerol, and 0.01% sodium azide.		Storage at -20°C

BACKGROUND

Tethers the endoplasmic reticulum to the cell membrane and promotes the formation of appositions between the endoplasmic reticulum and the cell membrane. Binds glycerophospholipids in a barrel-like domain and may play a role in cellular lipid transport. Plays a role in FGF signaling via its role in the rapid internalization of FGFR1 that has been activated by FGF1 binding; this occurs most likely via the AP-2 complex. Promotes the localization of SACM1L at endoplasmic reticulum-plasma membrane contact sites (EPCS).

APPLICATION

To ensure optimal assay performance, AREX recommends conducting reagent titration tailored to each testing system for optimal detection results.

WB	1:500 - 1:2000
----	----------------

*Results are sample-specific. Please refer to your local assay conditions and test parameters for reference.

PRODUCT OVERVIEW

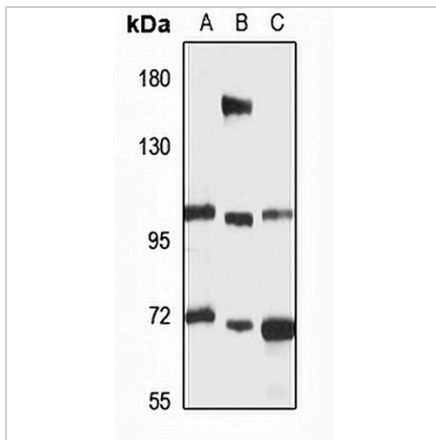
Description	Rabbit polyclonal antibody to E-Syt2
Specificity	Recognizes endogenous levels of E-Syt2 protein
Antibody Type	Primary antibody
Immunogen	Recombinant fusion protein of human E-Syt2. The exact sequence is proprietary.
Purification	The antibody was purified by immunogen affinity chromatography.
Molecular Weight	Predicted: 35; Observed: 102 kD
Form/Buffer	Liquid in 0.42% Potassium phosphate, 0.87% Sodium chloride, pH 7.3, 30% glycerol, and 0.01% sodium azide.
Alternative Names	FAM62B; KIAA1228; Extended synaptotagmin-2; E-Syt2; Chr2Syt
Gene Symbol	ESYT2
Entrez Gene	57488(Human); 52635(Mouse)
SwissProt	A0FGR8(Human); Q3TZZ7(Mouse)

*AREX continuously optimizes our products. Webpage content may not reflect the latest updates. For inquiries, please contact info@arexbio.com or your local distributor.

*Clone Number, Reactivity, Source/Host and Clonality can be found in the product name and Key Features section above.

DATASHEET**E-Syt2 Rabbit Polyclonal Antibody**

CAT. NO. APA15574

DATA

Western blot analysis of E-Syt2 expression in HT29 (A), mouse liver (B), mouse kidney (C) whole cell lysates. (Predicted band size: 35; 59; 98; 102; 104 kD; Observed band size: 102 kD)

STORAGE

Store at 4°C short term. For long term storage, store at -20°C, avoiding freeze/thaw cycles.

NOTE

For Research Use Only. Not for diagnostic, therapeutics, prophylactic or in vivo use.