

DATASHEET

Ethanolamine Kinase 1 Rabbit Polyclonal Antibody

CAT. NO. APA15576

KEY FEATURES

Target	Ethanolamine Kinase 1	Source / Host	Rabbit
Reactivity	Human, Mouse	Clonality	Polyclonal
Applications	WB	Conjugation	Unconjugated
Form / Buffer	Liquid in 0.42% Potassium phosphate, 0.87% Sodium chloride, pH 7.3, 30% glycerol, and 0.01% sodium azide.		Storage at -20°C

BACKGROUND

Highly specific for ethanolamine phosphorylation. May be a rate-controlling step in phosphatidylethanolamine biosynthesis.

APPLICATION

To ensure optimal assay performance, AREX recommends conducting reagent titration tailored to each testing system for optimal detection results.

WB	1:500 - 1:2000
----	----------------

*Results are sample-specific. Please refer to your local assay conditions and test parameters for reference.

PRODUCT OVERVIEW

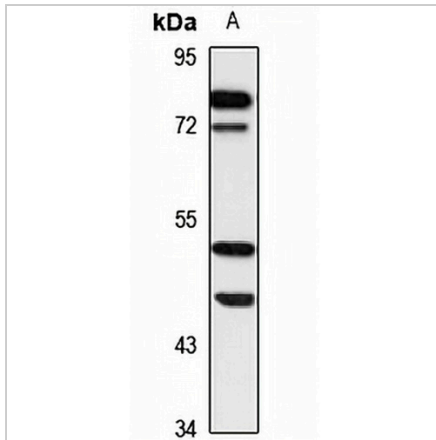
Description	Rabbit polyclonal antibody to Ethanolamine Kinase 1
Specificity	Recognizes endogenous levels of Ethanolamine Kinase 1 protein
Antibody Type	Primary antibody
Immunogen	Recombinant fusion protein of human Ethanolamine Kinase 1. The exact sequence is proprietary.
Purification	The antibody was purified by immunogen affinity chromatography.
Molecular Weight	Predicted: 27; Observed: 51 kD
Form/Buffer	Liquid in 0.42% Potassium phosphate, 0.87% Sodium chloride, pH 7.3, 30% glycerol, and 0.01% sodium azide.
Alternative Names	EKI1; Ethanolamine kinase 1; EK1 1
Gene Symbol	ETNK1
Entrez Gene	55500(Human); 75320(Mouse)
SwissProt	Q9HBU6(Human); Q9D4V0(Mouse)

*AREX continuously optimizes our products. Webpage content may not reflect the latest updates. For inquiries, please contact info@arexbio.com or your local distributor.

*Clone Number, Reactivity, Source/Host and Clonality can be found in the product name and Key Features section above.

DATASHEET**Ethanolamine Kinase 1 Rabbit Polyclonal Antibody**

CAT. NO. APA15576

DATA

Western blot analysis of Ethanolamine Kinase 1 expression in U87MG (A) whole cell lysates. (Predicted band size: 27; 50 kD; Observed band size: 51 kD)

STORAGE

Store at 4°C short term. For long term storage, store at -20°C, avoiding freeze/thaw cycles.

NOTE

For Research Use Only. Not for diagnostic, therapeutics, prophylactic or in vivo use.