

**DATASHEET**

**EXO5 Rabbit Polyclonal Antibody**

CAT. NO. APA15578

**KEY FEATURES**

Target	EXO5	Source / Host	Rabbit
Reactivity	Human, Mouse	Clonality	Polyclonal
Applications	WB	Conjugation	Unconjugated
Form / Buffer	Liquid in 0.42% Potassium phosphate, 0.87% Sodium chloride, pH 7.3, 30% glycerol, and 0.01% sodium azide.		Storage at -20°C

**BACKGROUND**

Single-stranded DNA (ssDNA) bidirectional exonuclease involved in DNA repair. Probably involved in DNA repair following ultraviolet (UV) irradiation and interstrand cross-links (ICLs) damage. Has both 5'-3' and 3'-5' exonuclease activities with a strong preference for 5'-ends. Acts as a sliding exonuclease that loads at ssDNA ends and then slides along the ssDNA prior to cutting; however the sliding and the 3'-5' exonuclease activities are abolished upon binding to the replication protein A (RPA) complex that enforces 5'-directionality activity.

**APPLICATION**

To ensure optimal assay performance, AREX recommends conducting reagent titration tailored to each testing system for optimal detection results.

WB	1:500 - 1:2000
----	----------------

\*Results are sample-specific. Please refer to your local assay conditions and test parameters for reference.

**PRODUCT OVERVIEW**

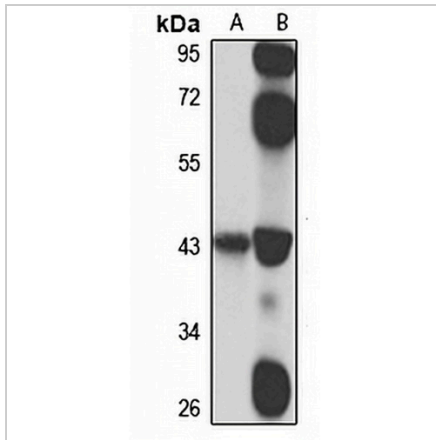
Description	Rabbit polyclonal antibody to EXO5
Specificity	Recognizes endogenous levels of EXO5 protein
Antibody Type	Primary antibody
Immunogen	Recombinant fusion protein of human EXO5. The exact sequence is proprietary.
Purification	The antibody was purified by immunogen affinity chromatography.
Molecular Weight	Predicted: 41 kD; Observed: 42 kD
Form/Buffer	Liquid in 0.42% Potassium phosphate, 0.87% Sodium chloride, pH 7.3, 30% glycerol, and 0.01% sodium azide.
Alternative Names	C1orf176; DEM1; Exonuclease V; Exo V; hExo5; Defects in morphology protein 1 homolog
Gene Symbol	EXO5
Entrez Gene	64789(Human); 73172(Mouse)
SwissProt	Q9H790(Human); Q9CXP9(Mouse)

\*AREX continuously optimizes our products. Webpage content may not reflect the latest updates. For inquiries, please contact [info@arexbio.com](mailto:info@arexbio.com) or your local distributor.

\*Clone Number, Reactivity, Source/Host and Clonality can be found in the product name and Key Features section above.

**DATASHEET****EXO5 Rabbit Polyclonal Antibody**

CAT. NO. APA15578

**DATA**

Western blot analysis of EXO5 expression in THP1 (A), mouse kidney (B) whole cell lysates.  
(Predicted band size: 41 kD; Observed band size: 42 kD)

**STORAGE**

Store at 4°C short term. For long term storage, store at -20°C, avoiding freeze/thaw cycles.

**NOTE**

For Research Use Only. Not for diagnostic, therapeutics, prophylactic or in vivo use.