

DATASHEET

SEC3 Rabbit Polyclonal Antibody

CAT. NO. APA15579

KEY FEATURES

Target	SEC3	Source / Host	Rabbit
Reactivity	Human, Mouse	Clonality	Polyclonal
Applications	WB	Conjugation	Unconjugated
Form / Buffer	Liquid in 0.42% Potassium phosphate, 0.87% Sodium chloride, pH 7.3, 30% glycerol, and 0.01% sodium azide.		Storage at-20°C

BACKGROUND

Component of the exocyst complex involved in the docking of exocytic vesicles with fusion sites on the plasma membrane.; (Microbial infection) Has an antiviral effect against flaviviruses by affecting viral RNA transcription and translation through the sequestration of elongation factor 1-alpha (EEF1A1). This results in decreased viral RNA synthesis and decreased viral protein translation.

APPLICATION

To ensure optimal assay performance, AREX recommends conducting reagent titration tailored to each testing system for optimal detection results.

WB	1:500 - 1:2000
----	----------------

*Results are sample-specific. Please refer to your local assay conditions and test parameters for reference.

PRODUCT OVERVIEW

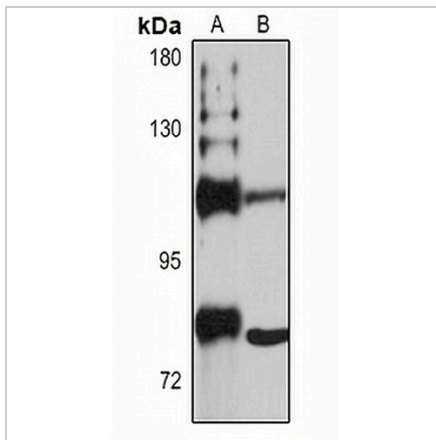
Description	Rabbit polyclonal antibody to SEC3
Specificity	Recognizes endogenous levels of SEC3 protein
Antibody Type	Primary antibody
Immunogen	Recombinant fusion protein of human SEC3. The exact sequence is proprietary.
Purification	The antibody was purified by immunogen affinity chromatography.
Molecular Weight	Predicted: 100; Observed: 102 kD
Form/Buffer	Liquid in 0.42% Potassium phosphate, 0.87% Sodium chloride, pH 7.3, 30% glycerol, and 0.01% sodium azide.
Alternative Names	SEC3; SEC3L1; Exocyst complex component 1; Exocyst complex component Sec3
Gene Symbol	EXOC1
Entrez Gene	55763(Human); 69940(Mouse)
SwissProt	Q9NV70(Human); Q8R3S6(Mouse)

*AREX continuously optimizes our products. Webpage content may not reflect the latest updates. For inquiries, please contact info@arexbio.com or your local distributor.

*Clone Number, Reactivity, Source/Host and Clonality can be found in the product name and Key Features section above.

DATASHEET**SEC3 Rabbit Polyclonal Antibody**

CAT. NO. APA15579

DATA

Western blot analysis of SEC3 expression in HeLa (A), mouse brain (B) whole cell lysates.
(Predicted band size: 100; 101 kD; Observed band size: 102 kD)

STORAGE

Store at 4°C short term. For long term storage, store at -20°C, avoiding freeze/thaw cycles.

NOTE

For Research Use Only. Not for diagnostic, therapeutics, prophylactic or in vivo use.