

## DATASHEET

# SEC6 Rabbit Polyclonal Antibody

CAT. NO. APA15580

### KEY FEATURES

Target	SEC6	Source / Host	Rabbit
Reactivity	Human, Mouse, Rat	Clonality	Polyclonal
Applications	WB, IHC	Conjugation	Unconjugated
Form / Buffer	Liquid in 0.42% Potassium phosphate, 0.87% Sodium chloride, pH 7.3, 30% glycerol, and 0.01% sodium azide.		Storage at-20°C

### BACKGROUND

Component of the exocyst complex involved in the docking of exocytic vesicles with fusion sites on the plasma membrane.

### APPLICATION

To ensure optimal assay performance, AREX recommends conducting reagent titration tailored to each testing system for optimal detection results.

WB	1:500 - 1:2000
IHC	1:50 - 1:200

\*Results are sample-specific. Please refer to your local assay conditions and test parameters for reference.

### PRODUCT OVERVIEW

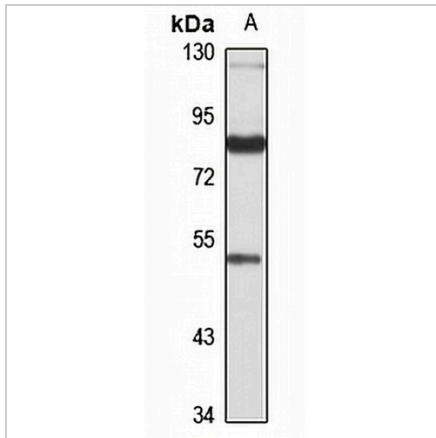
Description	Rabbit polyclonal antibody to SEC6
Specificity	Recognizes endogenous levels of SEC6 protein
Antibody Type	Primary antibody
Immunogen	KLH-conjugated synthetic peptide of human SEC6. The exact sequence is proprietary.
Purification	The antibody was purified by immunogen affinity chromatography.
Molecular Weight	Predicted: 73; Observed: 87 kD
Form/Buffer	Liquid in 0.42% Potassium phosphate, 0.87% Sodium chloride, pH 7.3, 30% glycerol, and 0.01% sodium azide.
Alternative Names	SEC6; SEC6L1; Exocyst complex component 3; Exocyst complex component Sec6
Gene Symbol	EXOC3
Entrez Gene	11336(Human); 211446(Mouse); 252881(Rat)
SwissProt	O60645(Human); Q6KAR6(Mouse); Q62825(Rat)

\*AREX continuously optimizes our products. Webpage content may not reflect the latest updates. For inquiries, please contact [info@arexbio.com](mailto:info@arexbio.com) or your local distributor.

\*Clone Number, Reactivity, Source/Host and Clonality can be found in the product name and Key Features section above.

**DATASHEET****SEC6 Rabbit Polyclonal Antibody**

CAT. NO. APA15580

**DATA**

Western blot analysis of SEC6 expression in A431 (A) whole cell lysates. (Predicted band size: 73; 85; 86 kD; Observed band size: 87 kD)

**STORAGE**

Store at 4°C short term. For long term storage, store at -20°C, avoiding freeze/thaw cycles.

**NOTE**

For Research Use Only. Not for diagnostic, therapeutics, prophylactic or in vivo use.