

DATASHEET

EXOSC10 Rabbit Polyclonal Antibody

CAT. NO. APA15581

KEY FEATURES

Target	EXOSC10	Source / Host	Rabbit
Reactivity	Human, Mouse, Rat	Clonality	Polyclonal
Applications	WB	Conjugation	Unconjugated
Form / Buffer	Liquid in 0.42% Potassium phosphate, 0.87% Sodium chloride, pH 7.3, 30% glycerol, and 0.01% sodium azide.		Storage at-20°C

BACKGROUND

Catalytic component of the RNA exosome complex which has 3'->5' exoribonuclease activity and participates in a multitude of cellular RNA processing and degradation events. In the nucleus, the RNA exosome complex is involved in proper maturation of stable RNA species such as rRNA, snRNA and snoRNA, in the elimination of RNA processing by-products and non-coding 'pervasive' transcripts, such as antisense RNA species and promoter-upstream transcripts (PROMPTS), and of mRNAs with processing defects, thereby limiting or excluding their export to the cytoplasm. Part of the small subunit (SSU) processome, first precursor of the small eukaryotic ribosomal subunit.

APPLICATION

To ensure optimal assay performance, AREX recommends conducting reagent titration tailored to each testing system for optimal detection results.

WB	1:500 - 1:2000
----	----------------

*Results are sample-specific. Please refer to your local assay conditions and test parameters for reference.

PRODUCT OVERVIEW

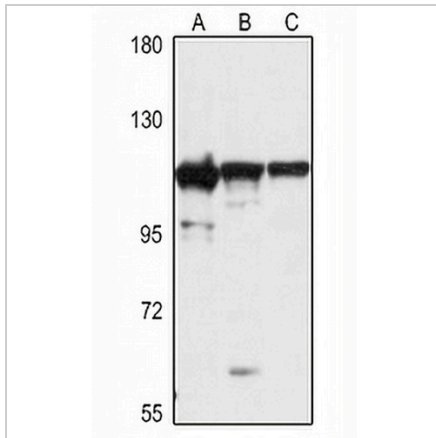
Description	Rabbit polyclonal antibody to EXOSC10
Specificity	Recognizes endogenous levels of EXOSC10 protein
Antibody Type	Primary antibody
Immunogen	Recombinant fusion protein of human EXOSC10. The exact sequence is proprietary.
Purification	The antibody was purified by immunogen affinity chromatography.
Molecular Weight	Predicted: 98; Observed: 110 kD
Form/Buffer	Liquid in 0.42% Potassium phosphate, 0.87% Sodium chloride, pH 7.3, 30% glycerol, and 0.01% sodium azide.
Alternative Names	PMSCL; PMSCL2; RRP6; Exosome component 10; Autoantigen PM/ScI 2; P100 polymyositis-scleroderma overlap syndrome-associated autoantigen; Polymyositis/scleroderma autoantigen 100 kDa; PM/ScI-100; Polymyositis/scleroderma autoantigen 2
Gene Symbol	EXOSC10
Entrez Gene	5394(Human); 50912(Mouse)
SwissProt	Q01780(Human); P56960(Mouse)

*AREX continuously optimizes our products. Webpage content may not reflect the latest updates. For inquiries, please contact info@arex.bio or your local distributor.

*Clone Number, Reactivity, Source/Host and Clonality can be found in the product name and Key Features section above.

DATASHEET**EXOSC10 Rabbit Polyclonal Antibody**

CAT. NO. APA15581

DATA

Western blot analysis of EXOSC10 expression in Raji (A), mouse testis (B), rat brain (C) whole cell lysates. (Predicted band size: 98; 100 kD; Observed band size: 110 kD)

STORAGE

Store at 4°C short term. For long term storage, store at -20°C, avoiding freeze/thaw cycles.

NOTE

For Research Use Only. Not for diagnostic, therapeutics, prophylactic or in vivo use.