

DATASHEET

EXTL2 Rabbit Polyclonal Antibody

CAT. NO. APA15583

KEY FEATURES

Target	EXTL2	Source / Host	Rabbit
Reactivity	Human, Mouse	Clonality	Polyclonal
Applications	WB	Conjugation	Unconjugated
Form / Buffer	Liquid in 0.42% Potassium phosphate, 0.87% Sodium chloride, pH 7.3, 30% glycerol, and 0.01% sodium azide.		Storage at -20°C

BACKGROUND

Glycosyltransferase required for the biosynthesis of heparan-sulfate and responsible for the alternating addition of beta-1-4-linked glucuronic acid (GlcA) and alpha-1-4-linked N-acetylglucosamine (GlcNAc) units to nascent heparan sulfate chains.

APPLICATION

To ensure optimal assay performance, AREX recommends conducting reagent titration tailored to each testing system for optimal detection results.

WB	1:500 - 1:2000
----	----------------

*Results are sample-specific. Please refer to your local assay conditions and test parameters for reference.

PRODUCT OVERVIEW

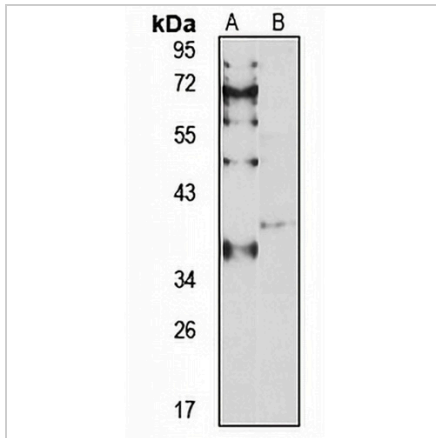
Description	Rabbit polyclonal antibody to EXTL2
Specificity	Recognizes endogenous levels of EXTL2 protein
Antibody Type	Primary antibody
Immunogen	Recombinant fusion protein of human EXTL2. The exact sequence is proprietary.
Purification	The antibody was purified by immunogen affinity chromatography.
Molecular Weight	Predicted: 37 kD; Observed: 37 kD
Form/Buffer	Liquid in 0.42% Potassium phosphate, 0.87% Sodium chloride, pH 7.3, 30% glycerol, and 0.01% sodium azide.
Alternative Names	EXTR2; Exostosin-like 2; Alpha-1 4-N-acetylhexosaminyltransferase EXTL2; Alpha-GalNAcT EXTL2; EXT-related protein 2; Glucuronyl-galactosyl-proteoglycan 4-alpha-N-acetylglucosaminyltransferase
Gene Symbol	EXTL2
Entrez Gene	2135(Human); 58193(Mouse)
SwissProt	Q9UBQ6(Human); Q9ES89(Mouse)

*AREX continuously optimizes our products. Webpage content may not reflect the latest updates. For inquiries, please contact info@arexbio.com or your local distributor.

*Clone Number, Reactivity, Source/Host and Clonality can be found in the product name and Key Features section above.

DATASHEET**EXTL2 Rabbit Polyclonal Antibody**

CAT. NO. APA15583

DATA

Western blot analysis of EXTL2 expression in HeLa (A), mouse heart (B) whole cell lysates. (Predicted band size: 37 kD; Observed band size: 37 kD)

STORAGE

Store at 4°C short term. For long term storage, store at -20°C, avoiding freeze/thaw cycles.

NOTE

For Research Use Only. Not for diagnostic, therapeutics, prophylactic or in vivo use.