

DATASHEET

DRR1 Rabbit Polyclonal Antibody

CAT. NO. APA15592

KEY FEATURES

Target	DRR1	Source / Host	Rabbit
Reactivity	Human	Clonality	Polyclonal
Applications	WB	Conjugation	Unconjugated
Form / Buffer	Liquid in 0.42% Potassium phosphate, 0.87% Sodium chloride, pH 7.3, 30% glycerol, and 0.01% sodium azide.		Storage at -20°C

BACKGROUND

Stress-inducible actin-binding protein that plays a role in synaptic and cognitive functions by modulating actin filamentous (F-actin) dynamics. Mediates polymerization of globular actin to F-actin. Also binds to, stabilizes and bundles F-actin. Involved in synaptic function by regulating neurite outgrowth in an actin-dependent manner and for the acquisition of hippocampus-dependent cognitive function, such as learning and long-term memory. Plays a role in the actin and microtubule cytoskeleton organization; negatively regulates focal adhesion (FA) assembly promoting malignant glial cell migration in an actin-, microtubule- and MAP1A-dependent manner dynamics. Mediates polymerization of globular actin to F-actin. Also binds to, stabilizes and bundles F-actin.

APPLICATION

To ensure optimal assay performance, AREX recommends conducting reagent titration tailored to each testing system for optimal detection results.

WB	1:500 - 1:2000
----	----------------

*Results are sample-specific. Please refer to your local assay conditions and test parameters for reference.

PRODUCT OVERVIEW

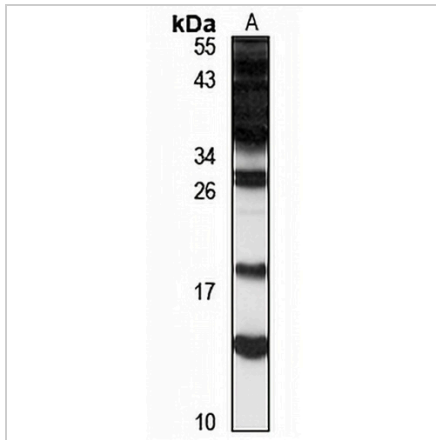
Description	Rabbit polyclonal antibody to DRR1
Specificity	Recognizes endogenous levels of DRR1 protein
Antibody Type	Primary antibody
Immunogen	Recombinant fusion protein of human DRR1. The exact sequence is proprietary.
Purification	The antibody was purified by immunogen affinity chromatography.
Molecular Weight	Predicted: 17 kD; Observed: 18 kD
Form/Buffer	Liquid in 0.42% Potassium phosphate, 0.87% Sodium chloride, pH 7.3, 30% glycerol, and 0.01% sodium azide.
Alternative Names	DRR1; TU3A; Protein FAM107A; Down-regulated in renal cell carcinoma 1; Protein TU3A
Gene Symbol	FAM107A
Entrez Gene	11170(Human)
SwissProt	O95990(Human)

*AREX continuously optimizes our products. Webpage content may not reflect the latest updates. For inquiries, please contact info@arexbio.com or your local distributor.

*Clone Number, Reactivity, Source/Host and Clonality can be found in the product name and Key Features section above.

DATASHEET**DRR1 Rabbit Polyclonal Antibody**

CAT. NO. APA15592

DATA

Western blot analysis of DRR1 expression in K562 (A) whole cell lysates. (Predicted band size: 17 kD; Observed band size: 18 kD)

STORAGE

Store at 4°C short term. For long term storage, store at -20°C, avoiding freeze/thaw cycles.

NOTE

For Research Use Only. Not for diagnostic, therapeutics, prophylactic or in vivo use.