

DATASHEET

FAM13A Rabbit Polyclonal Antibody

CAT. NO. APA15595

KEY FEATURES

Target	FAM13A	Source / Host	Rabbit
Reactivity	Human, Mouse	Clonality	Polyclonal
Applications	WB	Conjugation	Unconjugated
Form / Buffer	Liquid in 0.42% Potassium phosphate, 0.87% Sodium chloride, pH 7.3, 30% glycerol, and 0.01% sodium azide.		Storage at -20°C

BACKGROUND

Protein FAM13A (FAM13A). Belongs to the FAM13 family Tissue specificity: Isoform 1 is widely expressed, with highest expression in skeletal muscle, thymus, brain and lung. Isoform 3 is less abundant than isoform 1 and predominantly expressed in kidney, pancreas, liver, lung and thymus

APPLICATION

To ensure optimal assay performance, AREX recommends conducting reagent titration tailored to each testing system for optimal detection results.

WB	1:500 - 1:2000
----	----------------

*Results are sample-specific. Please refer to your local assay conditions and test parameters for reference.

PRODUCT OVERVIEW

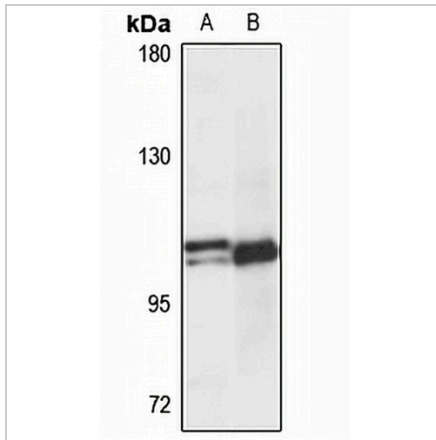
Description	Rabbit polyclonal antibody to FAM13A
Specificity	Recognizes endogenous levels of FAM13A protein
Antibody Type	Primary antibody
Immunogen	Recombinant fusion protein of human FAM13A. The exact sequence is proprietary.
Purification	The antibody was purified by immunogen affinity chromatography.
Molecular Weight	Predicted: 77; Observed: 116 kD
Form/Buffer	Liquid in 0.42% Potassium phosphate, 0.87% Sodium chloride, pH 7.3, 30% glycerol, and 0.01% sodium azide.
Alternative Names	FAM13A1; KIAA0914; Protein FAM13A
Gene Symbol	FAM13A
Entrez Gene	10144(Human); 58909(Mouse)
SwissProt	O94988(Human); Q8BGI4(Mouse)

*AREX continuously optimizes our products. Webpage content may not reflect the latest updates. For inquiries, please contact info@arexbio.com or your local distributor.

*Clone Number, Reactivity, Source/Host and Clonality can be found in the product name and Key Features section above.

DATASHEET**FAM13A Rabbit Polyclonal Antibody**

CAT. NO. APA15595

DATA

Western blot analysis of FAM13A expression in HeLa (A), mouse pancreas (B) whole cell lysates. (Predicted band size: 77; 78; 80; 116 kD; Observed band size: 116 kD)

STORAGE

Store at 4°C short term. For long term storage, store at -20°C, avoiding freeze/thaw cycles.

NOTE

For Research Use Only. Not for diagnostic, therapeutics, prophylactic or in vivo use.