

DATASHEET

Fibrillin-2 Rabbit Polyclonal Antibody

CAT. NO. APA15604

KEY FEATURES

Target	Fibrillin-2	Source / Host	Rabbit
Reactivity	Human, Mouse	Clonality	Polyclonal
Applications	WB	Conjugation	Unconjugated
Form / Buffer	Liquid in 0.42% Potassium phosphate, 0.87% Sodium chloride, pH 7.3, 30% glycerol, and 0.01% sodium azide.		Storage at -20°C

BACKGROUND

Fibrillins are structural components of 10-12 nm extracellular calcium-binding microfibrils, which occur either in association with elastin or in elastin-free bundles. Fibrillin-2-containing microfibrils regulate the early process of elastic fiber assembly. Regulates osteoblast maturation by controlling TGF-beta bioavailability and calibrating TGF-beta and BMP levels, respectively.

APPLICATION

To ensure optimal assay performance, AREX recommends conducting reagent titration tailored to each testing system for optimal detection results.

WB	1:500 - 1:2000
----	----------------

*Results are sample-specific. Please refer to your local assay conditions and test parameters for reference.

PRODUCT OVERVIEW

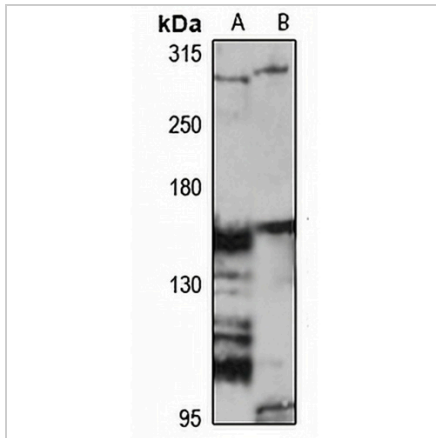
Description	Rabbit polyclonal antibody to Fibrillin-2
Specificity	Recognizes endogenous levels of Fibrillin-2 protein
Antibody Type	Primary antibody
Immunogen	Recombinant fusion protein of human Fibrillin-2. The exact sequence is proprietary.
Purification	The antibody was purified by immunogen affinity chromatography.
Molecular Weight	Predicted: 157; Observed: 290 kD
Form/Buffer	Liquid in 0.42% Potassium phosphate, 0.87% Sodium chloride, pH 7.3, 30% glycerol, and 0.01% sodium azide.
Alternative Names	Fibrillin-2
Gene Symbol	FBN2
Entrez Gene	2201(Human); 102642295; 14119(Mouse)
SwissProt	P35556(Human); Q61555(Mouse)

*AREX continuously optimizes our products. Webpage content may not reflect the latest updates. For inquiries, please contact info@arexbio.com or your local distributor.

*Clone Number, Reactivity, Source/Host and Clonality can be found in the product name and Key Features section above.

DATASHEET**Fibrillin-2 Rabbit Polyclonal Antibody**

CAT. NO. APA15604

DATA

Western blot analysis of Fibrillin-2 expression in LO2 (A), mouse brain (B) whole cell lysates. (Predicted band size: 157; 314 kD; Observed band size: 290 kD)

STORAGE

Store at 4°C short term. For long term storage, store at -20°C, avoiding freeze/thaw cycles.

NOTE

For Research Use Only. Not for diagnostic, therapeutics, prophylactic or in vivo use.