

## DATASHEET

# FBL2 Rabbit Polyclonal Antibody

CAT. NO. APA15607

### KEY FEATURES

Target	FBL2	Source / Host	Rabbit
Reactivity	Human, Mouse, Rat	Clonality	Polyclonal
Applications	WB	Conjugation	Unconjugated
Form / Buffer	Liquid in 0.42% Potassium phosphate, 0.87% Sodium chloride, pH 7.3, 30% glycerol, and 0.01% sodium azide.		Storage at -20°C

### BACKGROUND

Calcium-activated substrate recognition component of the SCF (SKP1-cullin-F-box protein) E3 ubiquitin-protein ligase complex, SCF(FBXL2), which mediates the ubiquitination and subsequent proteasomal degradation of target proteins E3 ubiquitin-protein ligase complex, SCF(FBXL2), which mediates the ubiquitination and subsequent proteasomal degradation of target proteins . Unlike many F-box proteins, FBXL2 does not seem to target phosphodegron within its substrates but rather calmodulin-binding motifs and is thereby antagonized by calmodulin . This is the case for the cyclins CCND2 and CCND3 which polyubiquitination and subsequent degradation are inhibited by calmodulin . Through CCND2 and CCND3 degradation induces cell-cycle arrest in G(0) .

### APPLICATION

To ensure optimal assay performance, AREX recommends conducting reagent titration tailored to each testing system for optimal detection results.

WB	1:500 - 1:2000
----	----------------

\*Results are sample-specific. Please refer to your local assay conditions and test parameters for reference.

### PRODUCT OVERVIEW

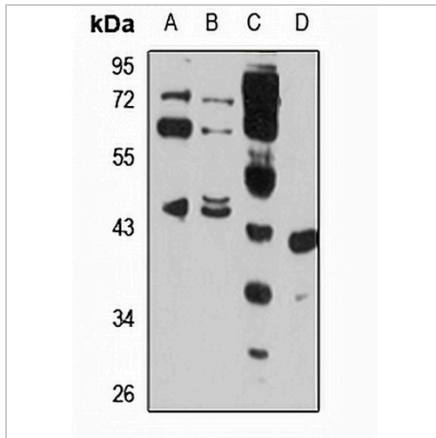
Description	Rabbit polyclonal antibody to FBL2
Specificity	Recognizes endogenous levels of FBL2 protein
Antibody Type	Primary antibody
Immunogen	Recombinant fusion protein of human FBL2. The exact sequence is proprietary.
Purification	The antibody was purified by immunogen affinity chromatography.
Molecular Weight	Predicted: 39; Observed: 38-47 kD
Form/Buffer	Liquid in 0.42% Potassium phosphate, 0.87% Sodium chloride, pH 7.3, 30% glycerol, and 0.01% sodium azide.
Alternative Names	FBL2; FBL3; F-box/LRR-repeat protein 2; F-box and leucine-rich repeat protein 2; F-box protein FBL2/FBL3
Gene Symbol	FBXL2
Entrez Gene	25827(Human); 72179(Mouse)
SwissProt	Q9UKC9(Human); Q8BH16(Mouse)

\*AREX continuously optimizes our products. Webpage content may not reflect the latest updates. For inquiries, please contact [info@arexbio.com](mailto:info@arexbio.com) or your local distributor.

\*Clone Number, Reactivity, Source/Host and Clonality can be found in the product name and Key Features section above.

**DATASHEET****FBL2 Rabbit Polyclonal Antibody**

CAT. NO. APA15607

**DATA**

Western blot analysis of FBL2 expression in HT1080 (A), SKOV3 (B), mouse brain (C), rat kidney (D) whole cell lysates. (Predicted band size: 39; 47 kD; Observed band size: 38-47 kD)

**STORAGE**

Store at 4°C short term. For long term storage, store at -20°C, avoiding freeze/thaw cycles.

**NOTE**

For Research Use Only. Not for diagnostic, therapeutics, prophylactic or in vivo use.