

DATASHEET

FBXW5 Rabbit Polyclonal Antibody

CAT. NO. APA15613

KEY FEATURES

Target	FBXW5	Source / Host	Rabbit
Reactivity	Human, Mouse, Rat	Clonality	Polyclonal
Applications	WB	Conjugation	Unconjugated
Form / Buffer	Liquid in 0.42% Potassium phosphate, 0.87% Sodium chloride, pH 7.3, 30% glycerol, and 0.01% sodium azide.		Storage at -20°C

BACKGROUND

Substrate recognition component of both SCF (SKP1-CUL1-F-box protein) and DCX (DDB1-CUL4-X-box) E3 ubiquitin-protein ligase complexes. Substrate recognition component of the SCF(FBXW5) E3 ubiquitin-protein ligase complex which mediates the ubiquitination and subsequent proteasomal degradation of SASS6 during S phase, leading to prevent centriole reduplication. The SCF(FBXW5) complex also mediates ubiquitination and degradation of actin-regulator EPS8 during G2 phase, leading to the transient degradation of EPS8 and subsequent cell shape changes required to allow mitotic progression. Substrate-specific adapter of the DCX(FBXW5) E3 ubiquitin-protein ligase complex which mediates the polyubiquitination and subsequent degradation of TSC2.

APPLICATION

To ensure optimal assay performance, AREX recommends conducting reagent titration tailored to each testing system for optimal detection results.

WB	1:500 - 1:2000
----	----------------

*Results are sample-specific. Please refer to your local assay conditions and test parameters for reference.

PRODUCT OVERVIEW

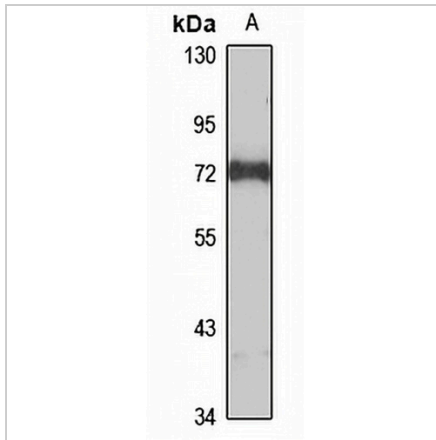
Description	Rabbit polyclonal antibody to FBXW5
Specificity	Recognizes endogenous levels of FBXW5 protein
Antibody Type	Primary antibody
Immunogen	Recombinant fusion protein of human FBXW5. The exact sequence is proprietary.
Purification	The antibody was purified by immunogen affinity chromatography.
Molecular Weight	Predicted: 42; Observed: 72 kD
Form/Buffer	Liquid in 0.42% Potassium phosphate, 0.87% Sodium chloride, pH 7.3, 30% glycerol, and 0.01% sodium azide.
Alternative Names	FBW5; F-box/WD repeat-containing protein 5; F-box and WD-40 domain-containing protein 5
Gene Symbol	FBXW5
Entrez Gene	54461(Human); 30839(Mouse); 362081(Rat)
SwissProt	Q969U6(Human); Q9QXW2(Mouse); Q4KLI9(Rat)

*AREX continuously optimizes our products. Webpage content may not reflect the latest updates. For inquiries, please contact info@arexbio.com or your local distributor.

*Clone Number, Reactivity, Source/Host and Clonality can be found in the product name and Key Features section above.

DATASHEET**FBXW5 Rabbit Polyclonal Antibody**

CAT. NO. APA15613

DATA

Western blot analysis of FBXW5 expression in A549 (A) whole cell lysates. (Predicted band size: 42; 63 kD; Observed band size: 72 kD)

STORAGE

Store at 4°C short term. For long term storage, store at -20°C, avoiding freeze/thaw cycles.

NOTE

For Research Use Only. Not for diagnostic, therapeutics, prophylactic or in vivo use.