

**DATASHEET**

**Fc epsilon RI alpha Rabbit Polyclonal Antibody**

CAT. NO. APA15614

**KEY FEATURES**

Target	Fc epsilon RI alpha	Source / Host	Rabbit
Reactivity	Human, Mouse, Rat	Clonality	Polyclonal
Applications	WB	Conjugation	Unconjugated
Form / Buffer	Liquid in 0.42% Potassium phosphate, 0.87% Sodium chloride, pH 7.3, 30% glycerol, and 0.01% sodium azide.		Storage at-20°C

**BACKGROUND**

High-affinity receptor for immunoglobulin epsilon/IgE. Mediates IgE effector functions in myeloid cells. Upon IgE binding and antigen/allergen cross-linking initiates signaling pathways that lead to myeloid cell activation and differentiation. On mast cells, basophils and eosinophils stimulates the secretion of vasoactive amines, lipid mediators and cytokines that contribute to inflammatory response, tissue remodeling and cytotoxicity against microbes. Triggers the immediate hypersensitivity response to allergens as a host defense mechanism against helminth parasites, pathogenic bacteria and venom toxicity. When dysregulated, it can elicit harmful life-threatening allergic and anaphylactic reactions.

**APPLICATION**

To ensure optimal assay performance, AREX recommends conducting reagent titration tailored to each testing system for optimal detection results.

WB	1:500 - 1:2000
----	----------------

\*Results are sample-specific. Please refer to your local assay conditions and test parameters for reference.

**PRODUCT OVERVIEW**

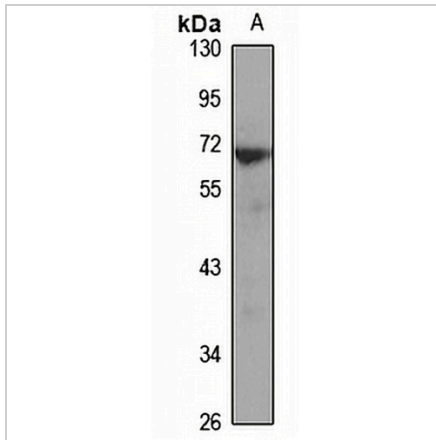
Description	Rabbit polyclonal antibody to Fc epsilon RI alpha
Specificity	Recognizes endogenous levels of Fc epsilon RI alpha protein
Antibody Type	Primary antibody
Immunogen	Recombinant fusion protein of human Fc epsilon RI alpha. The exact sequence is proprietary.
Purification	The antibody was purified by immunogen affinity chromatography.
Molecular Weight	Predicted: 29 kD; Observed: 68 kD
Form/Buffer	Liquid in 0.42% Potassium phosphate, 0.87% Sodium chloride, pH 7.3, 30% glycerol, and 0.01% sodium azide.
Alternative Names	FCE1A; High affinity immunoglobulin epsilon receptor subunit alpha; Fc-epsilon RI-alpha; FcERI; IgE Fc receptor subunit alpha
Gene Symbol	FCER1A
Entrez Gene	2205(Human); 14125(Mouse); 25047(Rat)
SwissProt	P12319(Human); P20489(Mouse); P12371(Rat)

\*AREX continuously optimizes our products. Webpage content may not reflect the latest updates. For inquiries, please contact [info@arexbio.com](mailto:info@arexbio.com) or your local distributor.

\*Clone Number, Reactivity, Source/Host and Clonality can be found in the product name and Key Features section above.

**DATASHEET****Fc epsilon RI alpha Rabbit Polyclonal Antibody**

CAT. NO. APA15614

**DATA**

Western blot analysis of Fc epsilon RI alpha expression in HT29 (A) whole cell lysates.  
(Predicted band size: 29 kD; Observed band size: 68 kD)

**STORAGE**

Store at 4°C short term. For long term storage, store at -20°C, avoiding freeze/thaw cycles.

**NOTE**

For Research Use Only. Not for diagnostic, therapeutics, prophylactic or in vivo use.