

DATASHEET

Fc epsilon RI gamma Rabbit Polyclonal Antibody

CAT. NO. APA15615

KEY FEATURES

Target	Fc epsilon RI gamma	Source / Host	Rabbit
Reactivity	Mouse, Rat	Clonality	Polyclonal
Applications	WB, IHC	Conjugation	Unconjugated
Form / Buffer	Liquid in 0.42% Potassium phosphate, 0.87% Sodium chloride, pH 7.3, 30% glycerol, and 0.01% sodium azide.		Storage at -20°C

BACKGROUND

Adapter protein containing an immunoreceptor tyrosine-based activation motif (ITAM) that transduces activation signals from various immunoreceptors. As a component of the high-affinity immunoglobulin E (IgE) receptor, mediates allergic inflammatory signaling in mast cells. As a constitutive component of interleukin-3 receptor complex, selectively mediates interleukin 4/IL4 production by basophils, priming T-cells toward effector T-helper 2 subset. Associates with pattern recognition receptors CLEC4D and CLEC4E to form a functional signaling complex in myeloid cells.

APPLICATION

To ensure optimal assay performance, AREX recommends conducting reagent titration tailored to each testing system for optimal detection results.

WB	1:500 - 1:2000
IHC	1:50 - 1:200

*Results are sample-specific. Please refer to your local assay conditions and test parameters for reference.

PRODUCT OVERVIEW

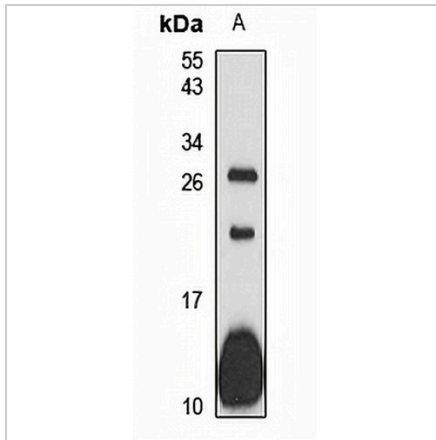
Description	Rabbit polyclonal antibody to Fc epsilon RI gamma
Specificity	Recognizes endogenous levels of Fc epsilon RI gamma protein
Antibody Type	Primary antibody
Immunogen	Recombinant fusion protein of human Fc epsilon RI gamma . The exact sequence is proprietary.
Purification	The antibody was purified by immunogen affinity chromatography.
Molecular Weight	Predicted: 9 kD; Observed: 12 kD
Form/Buffer	Liquid in 0.42% Potassium phosphate, 0.87% Sodium chloride, pH 7.3, 30% glycerol, and 0.01% sodium azide.
Alternative Names	High affinity immunoglobulin epsilon receptor subunit gamma; Fc receptor gamma-chain; FcRgamma; Fc-epsilon RI-gamma; IgE Fc receptor subunit gamma; FcεRI gamma
Gene Symbol	FCER1G
Entrez Gene	2207(Human); 14127(Mouse); 25441(Rat)
SwissProt	P30273(Human); P20491(Mouse); P20411(Rat)

*AREX continuously optimizes our products. Webpage content may not reflect the latest updates. For inquiries, please contact info@arexbio.com or your local distributor.

*Clone Number, Reactivity, Source/Host and Clonality can be found in the product name and Key Features section above.

DATASHEET**Fc epsilon RI gamma Rabbit Polyclonal Antibody**

CAT. NO. APA15615

DATA

Western blot analysis of Fc epsilon RI gamma expression in mouse spleen (A) whole cell lysates. (Predicted band size: 9 kD; Observed band size: 12 kD)

STORAGE

Store at 4°C short term. For long term storage, store at -20°C, avoiding freeze/thaw cycles.

NOTE

For Research Use Only. Not for diagnostic, therapeutics, prophylactic or in vivo use.