

## DATASHEET

# FCGR1B Rabbit Polyclonal Antibody

CAT. NO. APA15617

### KEY FEATURES

Target	FCGR1B	Source / Host	Rabbit
Reactivity	Human, Mouse	Clonality	Polyclonal
Applications	WB, IHC	Conjugation	Unconjugated
Form / Buffer	Liquid in 0.42% Potassium phosphate, 0.87% Sodium chloride, pH 7.3, 30% glycerol, and 0.01% sodium azide.		Storage at-20°C

### BACKGROUND

May bind to the Fc region of immunoglobulins gamma with a low affinity compared to FCGR1A. May function in the humoral immune response.

### APPLICATION

To ensure optimal assay performance, AREX recommends conducting reagent titration tailored to each testing system for optimal detection results.

WB	1:500 - 1:2000
IHC	1:50 - 1:200

\*Results are sample-specific. Please refer to your local assay conditions and test parameters for reference.

### PRODUCT OVERVIEW

Description	Rabbit polyclonal antibody to FCGR1B
Specificity	Recognizes endogenous levels of FCGR1B protein
Antibody Type	Primary antibody
Immunogen	KLH-conjugated synthetic peptide of human FCGR1B. The exact sequence is proprietary.
Purification	The antibody was purified by immunogen affinity chromatography.
Molecular Weight	Predicted: 32 kD; Observed: 27 kD
Form/Buffer	Liquid in 0.42% Potassium phosphate, 0.87% Sodium chloride, pH 7.3, 30% glycerol, and 0.01% sodium azide.
Alternative Names	IGFRB; High affinity immunoglobulin gamma Fc receptor IB; IgG Fc receptor IB; Fc-gamma RIB; FcRIB; hFcgammaRIB
Gene Symbol	FCGR1B
Entrez Gene	2210(Human)
SwissProt	Q92637(Human)

\*AREX continuously optimizes our products. Webpage content may not reflect the latest updates. For inquiries, please contact [info@arexbio.com](mailto:info@arexbio.com) or your local distributor.

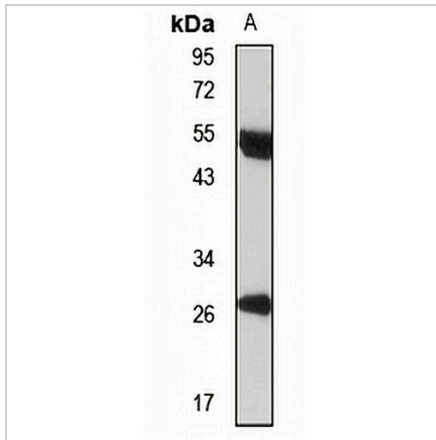
\*Clone Number, Reactivity, Source/Host and Clonality can be found in the product name and Key Features section above.

**DATASHEET**

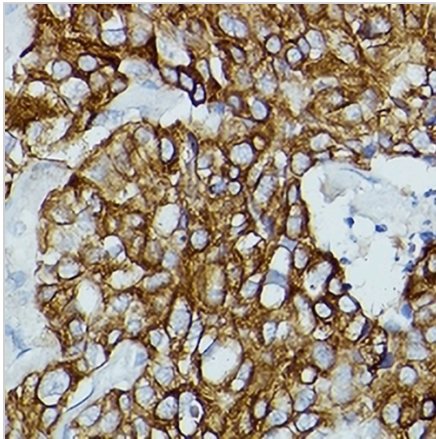
**FCGR1B Rabbit Polyclonal Antibody**

CAT. NO. APA15617

**DATA**



Western blot analysis of FCGR1B expression in mouse plasma (A) whole cell lysates. (Predicted band size: 32 kD; Observed band size: 27 kD)



Immunohistochemical analysis of FCGR1B staining in human breast cancer formalin fixed paraffin embedded tissue section. The section was pre-treated using heat mediated antigen retrieval with sodium citrate buffer (pH 6.0). The section was then incubated with the antibody at room temperature and detected using an HRP conjugated compact polymer system. DAB was used as the chromogen. The section was then counterstained with haematoxylin and mounted with DPX.

**STORAGE**

Store at 4°C short term. For long term storage, store at -20°C, avoiding freeze/thaw cycles.

**NOTE**

For Research Use Only. Not for diagnostic, therapeutics, prophylactic or in vivo use.