

DATASHEET

Ficolin 2 Rabbit Polyclonal Antibody

CAT. NO. APA15621

KEY FEATURES

Target	Ficolin 2	Source / Host	Rabbit
Reactivity	Human, Mouse, Rat	Clonality	Polyclonal
Applications	WB, IHC	Conjugation	Unconjugated
Form / Buffer	Liquid in 0.42% Potassium phosphate, 0.87% Sodium chloride, pH 7.3, 30% glycerol, and 0.01% sodium azide.		Storage at -20°C

BACKGROUND

Calcium-dependent lectin, which acts as a pattern recognition receptor that initiates the lectin pathway of the complement system, a cascade of proteins that leads to phagocytosis and breakdown of pathogens and signaling that strengthens the adaptive immune system. Specifically recognizes and binds carbohydrates on the pathogen surface, activating the MASP1 serine protease and initiating the proteolytic cascade of the lectin complement pathway. Specifically binds N-Acetylglucosamine (GlcNAc), as well as phosphocholine and lipoteichoic acid moieties on the surface of pathogens. Enhances phagocytosis of S.typhimurium by neutrophils, suggesting an opsonic effect.

APPLICATION

To ensure optimal assay performance, AREX recommends conducting reagent titration tailored to each testing system for optimal detection results.

WB	1:500 - 1:2000
IHC	1:50 - 1:200

*Results are sample-specific. Please refer to your local assay conditions and test parameters for reference.

PRODUCT OVERVIEW

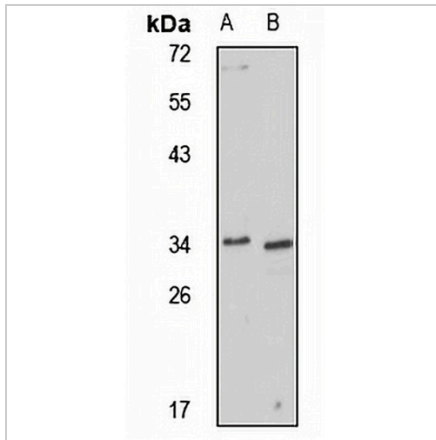
Description	Rabbit polyclonal antibody to Ficolin 2
Specificity	Recognizes endogenous levels of Ficolin 2 protein
Antibody Type	Primary antibody
Immunogen	Recombinant fusion protein of human Ficolin 2. The exact sequence is proprietary.
Purification	The antibody was purified by immunogen affinity chromatography.
Molecular Weight	Predicted: 34 kD; Observed: 34 kD
Form/Buffer	Liquid in 0.42% Potassium phosphate, 0.87% Sodium chloride, pH 7.3, 30% glycerol, and 0.01% sodium azide.
Alternative Names	FCNL; Ficolin-2; 37 kDa elastin-binding protein; Collagen/fibrinogen domain-containing protein 2; EBP-37; Ficolin-B; Ficolin-beta; Hucolin; L-ficolin; Serum lectin p35
Gene Symbol	FCN2
Entrez Gene	2220(Human); 14134(Mouse); 114091(Rat)
SwissProt	Q15485(Human); O70497(Mouse); P57756(Rat)

*AREX continuously optimizes our products. Webpage content may not reflect the latest updates. For inquiries, please contact info@arexbio.com or your local distributor.

*Clone Number, Reactivity, Source/Host and Clonality can be found in the product name and Key Features section above.

DATASHEET**Ficolin 2 Rabbit Polyclonal Antibody**

CAT. NO. APA15621

DATA

Western blot analysis of Ficolin 2 expression in mouse lung (A), rat spleen (B) whole cell lysates. (Predicted band size: 34 kD; Observed band size: 34 kD)

STORAGE

Store at 4°C short term. For long term storage, store at -20°C, avoiding freeze/thaw cycles.

NOTE

For Research Use Only. Not for diagnostic, therapeutics, prophylactic or in vivo use.