

**DATASHEET**
**FEM1B Rabbit Polyclonal Antibody**
**CAT. NO. APA15625**
**KEY FEATURES**

Target	FEM1B	Source / Host	Rabbit
Reactivity	Human, Mouse, Rat	Clonality	Polyclonal
Applications	WB	Conjugation	Unconjugated
Form / Buffer	Liquid in 0.42% Potassium phosphate, 0.87% Sodium chloride, pH 7.3, 30% glycerol, and 0.01% sodium azide.		Storage at -20°C

**BACKGROUND**

Substrate-recognition component of a Cul2-RING (CRL2) E3 ubiquitin-protein ligase complex of the DesCEND (destruction via C-end degrons) pathway, which recognizes a C-degron located at the extreme C terminus of target proteins, leading to their ubiquitination and degradation. E3 ubiquitin-protein ligase complex of the DesCEND (destruction via C-end degrons) pathway, which recognizes a C-degron located at the extreme C terminus of target proteins, leading to their ubiquitination and degradation. The C-degron recognized by the DesCEND pathway is usually a motif of less than ten residues and can be present in full-length proteins, truncated proteins or proteolytically cleaved forms.

**APPLICATION**

To ensure optimal assay performance, AREX recommends conducting reagent titration tailored to each testing system for optimal detection results.

WB	1:500 - 1:2000
----	----------------

\*Results are sample-specific. Please refer to your local assay conditions and test parameters for reference.

**PRODUCT OVERVIEW**

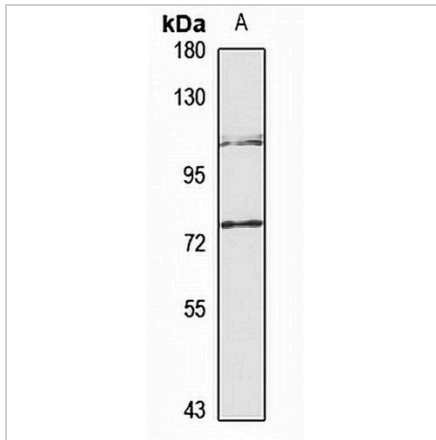
Description	Rabbit polyclonal antibody to FEM1B
Specificity	Recognizes endogenous levels of FEM1B protein
Antibody Type	Primary antibody
Immunogen	Recombinant fusion protein of human FEM1B. The exact sequence is proprietary.
Purification	The antibody was purified by immunogen affinity chromatography.
Molecular Weight	Predicted: 70 kD; Observed: 75 kD
Form/Buffer	Liquid in 0.42% Potassium phosphate, 0.87% Sodium chloride, pH 7.3, 30% glycerol, and 0.01% sodium azide.
Alternative Names	F1AA; KIAA0396; Protein fem-1 homolog B; FEM1b; FEM1-beta; Fem-1-like death receptor-binding protein alpha; Fem-1-like in apoptotic pathway protein alpha; F1A-alpha
Gene Symbol	FEM1B
Entrez Gene	10116(Human); 14155(Mouse); 315745(Rat)
SwissProt	Q9UK73(Human); Q9ZZG0(Mouse); P0C6P7(Rat)

\*AREX continuously optimizes our products. Webpage content may not reflect the latest updates. For inquiries, please contact [info@arexbio.com](mailto:info@arexbio.com) or your local distributor.

\*Clone Number, Reactivity, Source/Host and Clonality can be found in the product name and Key Features section above.

**DATASHEET****FEM1B Rabbit Polyclonal Antibody**

CAT. NO. APA15625

**DATA**

Western blot analysis of FEM1B expression in A549 (A) whole cell lysates. (Predicted band size: 70 kD; Observed band size: 75 kD)

**STORAGE**

Store at 4°C short term. For long term storage, store at -20°C, avoiding freeze/thaw cycles.

**NOTE**

For Research Use Only. Not for diagnostic, therapeutics, prophylactic or in vivo use.