

## DATASHEET

# FGF10 Rabbit Polyclonal Antibody

CAT. NO. APA15630

### KEY FEATURES

Target	FGF10	Source / Host	Rabbit
Reactivity	Human, Mouse, Rat	Clonality	Polyclonal
Applications	WB	Conjugation	Unconjugated
Form / Buffer	Liquid in 0.42% Potassium phosphate, 0.87% Sodium chloride, pH 7.3, 30% glycerol, and 0.01% sodium azide.		Storage at -20°C

### BACKGROUND

Plays an important role in the regulation of embryonic development, cell proliferation and cell differentiation. Required for normal branching morphogenesis. May play a role in wound healing.

### APPLICATION

To ensure optimal assay performance, AREX recommends conducting reagent titration tailored to each testing system for optimal detection results.

WB	1:500 - 1:1000
----	----------------

\*Results are sample-specific. Please refer to your local assay conditions and test parameters for reference.

### PRODUCT OVERVIEW

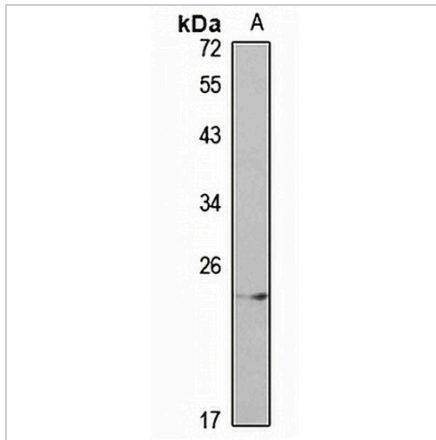
Description	Rabbit polyclonal antibody to FGF10
Specificity	Recognizes endogenous levels of FGF10 protein
Antibody Type	Primary antibody
Immunogen	Recombinant fusion protein of human FGF10. The exact sequence is proprietary.
Purification	The antibody was purified by immunogen affinity chromatography.
Molecular Weight	Predicted: 23 kD; Observed: 23 kD
Form/Buffer	Liquid in 0.42% Potassium phosphate, 0.87% Sodium chloride, pH 7.3, 30% glycerol, and 0.01% sodium azide.
Alternative Names	Fibroblast growth factor 10; FGF-10; Keratinocyte growth factor 2
Gene Symbol	FGF10
Entrez Gene	2255(Human); 14165(Mouse); 25443(Rat)
SwissProt	O15520(Human); O35565(Mouse); P70492(Rat)

\*AREX continuously optimizes our products. Webpage content may not reflect the latest updates. For inquiries, please contact [info@arexbio.com](mailto:info@arexbio.com) or your local distributor.

\*Clone Number, Reactivity, Source/Host and Clonality can be found in the product name and Key Features section above.

**DATASHEET****FGF10 Rabbit Polyclonal Antibody**

CAT. NO. APA15630

**DATA**

Western blot analysis of FGF10 expression in A549 (A) whole cell lysates. (Predicted band size: 23 kD; Observed band size: 23 kD)

**STORAGE**

Store at 4°C short term. For long term storage, store at -20°C, avoiding freeze/thaw cycles.

**NOTE**

For Research Use Only. Not for diagnostic, therapeutics, prophylactic or in vivo use.