

DATASHEET

HYPE Rabbit Polyclonal Antibody

CAT. NO. APA15635

KEY FEATURES

Target	HYPE	Source / Host	Rabbit
Reactivity	Human, Mouse, Rat	Clonality	Polyclonal
Applications	WB	Conjugation	Unconjugated
Form / Buffer	Liquid in 0.42% Potassium phosphate, 0.87% Sodium chloride, pH 7.3, 30% glycerol, and 0.01% sodium azide.		Storage at -20°C

BACKGROUND

Protein that can both mediate the addition of adenosine 5'-monophosphate (AMP) to specific residues of target proteins (AMPylation), and the removal of the same modification from target proteins (de-AMPylation), depending on the context . The side chain of Glu-231 determines which of the two opposing activities (AMPylase or de-AMPylase) will take place to specific residues of target proteins (AMPylation), and the removal of the same modification from target proteins (de-AMPylation), depending on the context . The side chain of Glu-231 determines which of the two opposing activities (AMPylase or de-AMPylase) will take place . Acts as a key regulator of the ERN1/IRE1-mediated unfolded protein response (UPR) by mediating AMPylation or de-AMPylation of HSPA5/BiP .

APPLICATION

To ensure optimal assay performance, AREX recommends conducting reagent titration tailored to each testing system for optimal detection results.

WB	1:500 - 1:2000
----	----------------

*Results are sample-specific. Please refer to your local assay conditions and test parameters for reference.

PRODUCT OVERVIEW

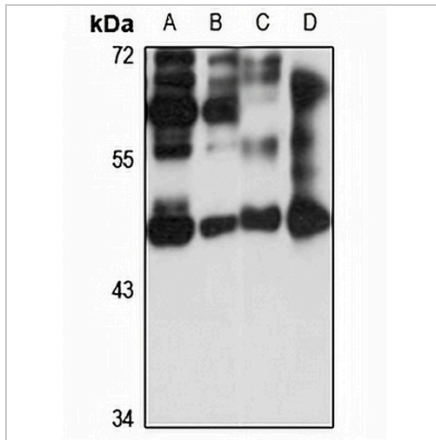
Description	Rabbit polyclonal antibody to HYPE
Specificity	Recognizes endogenous levels of HYPE protein
Antibody Type	Primary antibody
Immunogen	Recombinant fusion protein of human HYPE. The exact sequence is proprietary.
Purification	The antibody was purified by immunogen affinity chromatography.
Molecular Weight	Predicted: 51 kD; Observed: 51 kD
Form/Buffer	Liquid in 0.42% Potassium phosphate, 0.87% Sodium chloride, pH 7.3, 30% glycerol, and 0.01% sodium azide.
Alternative Names	HIP13; HYPE; Adenosine monophosphate-protein transferase FICD; AMPylator FICD; FIC domain-containing protein; Huntingtin yeast partner E; Huntingtin-interacting protein 13; HIP-13; Huntingtin-interacting protein E
Gene Symbol	FICD
Entrez Gene	11153(Human); 231630(Mouse); 288741(Rat)
SwissProt	Q9BVA6(Human); Q8BIX9(Mouse); Q6AY47(Rat)

*AREX continuously optimizes our products. Webpage content may not reflect the latest updates. For inquiries, please contact info@arexbio.com or your local distributor.

*Clone Number, Reactivity, Source/Host and Clonality can be found in the product name and Key Features section above.

DATASHEET**HYPE Rabbit Polyclonal Antibody**

CAT. NO. APA15635

DATA

Western blot analysis of HYPE expression in A549 (A), Jurkat (B), mouse lung (C), rat ovary (D) whole cell lysates. (Predicted band size: 51 kD; Observed band size: 51 kD)

STORAGE

Store at 4°C short term. For long term storage, store at -20°C, avoiding freeze/thaw cycles.

NOTE

For Research Use Only. Not for diagnostic, therapeutics, prophylactic or in vivo use.