

DATASHEET

DOC1 Rabbit Polyclonal Antibody

CAT. NO. APA15636

KEY FEATURES

Target	DOC1	Source / Host	Rabbit
Reactivity	Human, Mouse	Clonality	Polyclonal
Applications	WB	Conjugation	Unconjugated
Form / Buffer	Liquid in 0.42% Potassium phosphate, 0.87% Sodium chloride, pH 7.3, 30% glycerol, and 0.01% sodium azide.		Storage at-20°C

BACKGROUND

Acts as a regulator of the antiangiogenic activity on endothelial cells. When overexpressed in endothelial cells, leads to inhibition of cell proliferation and migration and an increase in apoptosis. Inhibits melanoma growth When expressed in tumor-associated vasculature.

APPLICATION

To ensure optimal assay performance, AREX recommends conducting reagent titration tailored to each testing system for optimal detection results.

WB	1:500 - 1:2000
----	----------------

*Results are sample-specific. Please refer to your local assay conditions and test parameters for reference.

PRODUCT OVERVIEW

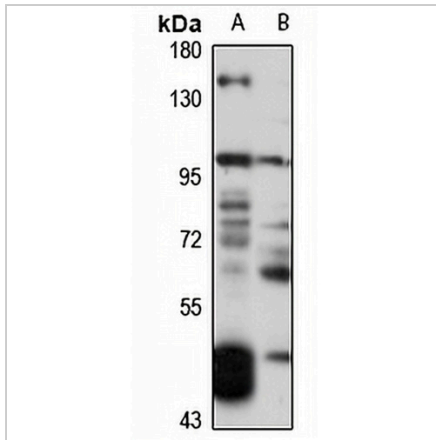
Description	Rabbit polyclonal antibody to DOC1
Specificity	Recognizes endogenous levels of DOC1 protein
Antibody Type	Primary antibody
Immunogen	Recombinant fusion protein of human DOC1. The exact sequence is proprietary.
Purification	The antibody was purified by immunogen affinity chromatography.
Molecular Weight	Predicted: 130 kD; Observed: 110 kD
Form/Buffer	Liquid in 0.42% Potassium phosphate, 0.87% Sodium chloride, pH 7.3, 30% glycerol, and 0.01% sodium azide.
Alternative Names	COL4A3BPIP; DOC1; GIP90; Filamin A-interacting protein 1-like; 130 kDa GPBP-interacting protein; 90 kDa GPBP-interacting protein; Protein down-regulated in ovarian cancer 1; DOC-1
Gene Symbol	FILIP1L
Entrez Gene	11259(Human)
SwissProt	Q4L180(Human); Q6P6L0(Mouse)

*AREX continuously optimizes our products. Webpage content may not reflect the latest updates. For inquiries, please contact info@arexbio.com or your local distributor.

*Clone Number, Reactivity, Source/Host and Clonality can be found in the product name and Key Features section above.

DATASHEET**DOC1 Rabbit Polyclonal Antibody**

CAT. NO. APA15636

DATA

Western blot analysis of DOC1 expression in HT29 (A), mouse ovary (B) whole cell lysates.
(Predicted band size: 130 kD; Observed band size: 110 kD)

STORAGE

Store at 4°C short term. For long term storage, store at -20°C, avoiding freeze/thaw cycles.

NOTE

For Research Use Only. Not for diagnostic, therapeutics, prophylactic or in vivo use.