

DATASHEET

FKBP10 Rabbit Polyclonal Antibody

CAT. NO. APA15638

KEY FEATURES

Target	FKBP10	Source / Host	Rabbit
Reactivity	Human, Mouse	Clonality	Polyclonal
Applications	WB	Conjugation	Unconjugated
Form / Buffer	Liquid in 0.42% Potassium phosphate, 0.87% Sodium chloride, pH 7.3, 30% glycerol, and 0.01% sodium azide.		Storage at -20°C

BACKGROUND

PPIases accelerate the folding of proteins during protein synthesis.

APPLICATION

To ensure optimal assay performance, AREX recommends conducting reagent titration tailored to each testing system for optimal detection results.

WB	1:500 - 1:1000
----	----------------

*Results are sample-specific. Please refer to your local assay conditions and test parameters for reference.

PRODUCT OVERVIEW

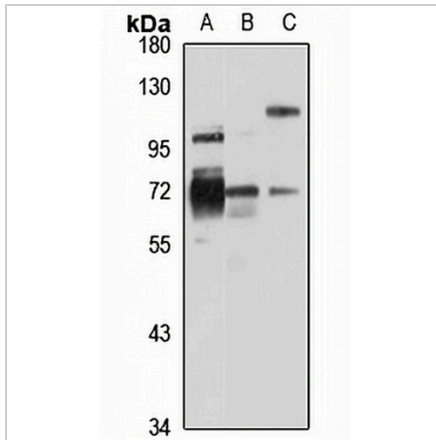
Description	Rabbit polyclonal antibody to FKBP10
Specificity	Recognizes endogenous levels of FKBP10 protein
Antibody Type	Primary antibody
Immunogen	Recombinant fusion protein of human FKBP10. The exact sequence is proprietary.
Purification	The antibody was purified by immunogen affinity chromatography.
Molecular Weight	Predicted: 38; Observed: 70 kD
Form/Buffer	Liquid in 0.42% Potassium phosphate, 0.87% Sodium chloride, pH 7.3, 30% glycerol, and 0.01% sodium azide.
Alternative Names	FKBP65; Peptidyl-prolyl cis-trans isomerase FKBP10; PPIase FKBP10; 65 kDa FK506-binding protein; 65 kDa FKBP; FKBP-65; FK506-binding protein 10; FKBP-10; Immunophilin FKBP65; Rotamase
Gene Symbol	FKBP10
Entrez Gene	60681(Human); 14230(Mouse)
SwissProt	Q96AY3(Human); Q61576(Mouse)

*AREX continuously optimizes our products. Webpage content may not reflect the latest updates. For inquiries, please contact info@arexbio.com or your local distributor.

*Clone Number, Reactivity, Source/Host and Clonality can be found in the product name and Key Features section above.

DATASHEET**FKBP10 Rabbit Polyclonal Antibody**

CAT. NO. APA15638

DATA

Western blot analysis of FKBP10 expression in HeLa (A), mouse kidney (B), mouse heart (C) whole cell lysates. (Predicted band size: 38; 64 kD; Observed band size: 70 kD)

STORAGE

Store at 4°C short term. For long term storage, store at -20°C, avoiding freeze/thaw cycles.

NOTE

For Research Use Only. Not for diagnostic, therapeutics, prophylactic or in vivo use.