

DATASHEET

FKBP1B Rabbit Polyclonal Antibody

CAT. NO. APA15640

KEY FEATURES

Target	FKBP1B	Source / Host	Rabbit
Reactivity	Human, Mouse, Rat	Clonality	Polyclonal
Applications	WB, IHC, IF/ICC	Conjugation	Unconjugated
Form / Buffer	Liquid in 0.42% Potassium phosphate, 0.87% Sodium chloride, pH 7.3, 30% glycerol, and 0.01% sodium azide.		Storage at -20°C

BACKGROUND

Has the potential to contribute to the immunosuppressive and toxic effects of FK506 and rapamycin. PPIases accelerate the folding of proteins. It catalyzes the cis-trans isomerization of proline imidic peptide bonds in oligopeptides.

APPLICATION

To ensure optimal assay performance, AREX recommends conducting reagent titration tailored to each testing system for optimal detection results.

WB	1:500 - 1:2000
IHC	1:50 - 1:200
IF/ICC	1:50 - 1:200

*Results are sample-specific. Please refer to your local assay conditions and test parameters for reference.

PRODUCT OVERVIEW

Description	Rabbit polyclonal antibody to FKBP1B
Specificity	Recognizes endogenous levels of FKBP1B protein
Antibody Type	Primary antibody
Immunogen	KLH-conjugated synthetic peptide of human FKBP1B. The exact sequence is proprietary.
Purification	The antibody was purified by immunogen affinity chromatography.
Molecular Weight	Predicted: 8; Observed: 13 kD
Form/Buffer	Liquid in 0.42% Potassium phosphate, 0.87% Sodium chloride, pH 7.3, 30% glycerol, and 0.01% sodium azide.
Alternative Names	FKBP12.6; FKBP1L; FKBP9; OTK4; Peptidyl-prolyl cis-trans isomerase FKBP1B; PPIase FKBP1B; 12.6 kDa FK506-binding protein; 12.6 kDa FKBP; FKBP-12.6; FK506-binding protein 1B; FKBP-1B; Immunophilin FKBP12.6; Rotamase; h-FKBP-12
Gene Symbol	FKBP1B
Entrez Gene	2281(Human); 14226(Mouse); 58950(Rat)
SwissProt	P68106(Human); Q9Z2I2(Mouse); P97534(Rat)

*AREX continuously optimizes our products. Webpage content may not reflect the latest updates. For inquiries, please contact info@arexbio.com or your local distributor.

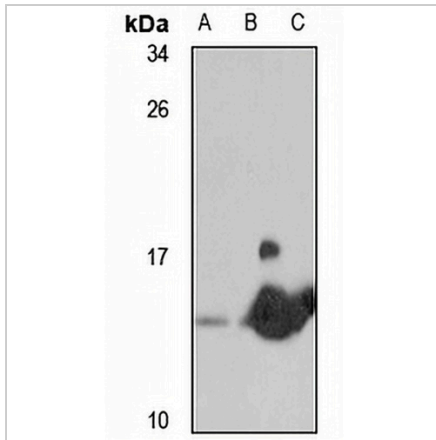
*Clone Number, Reactivity, Source/Host and Clonality can be found in the product name and Key Features section above.

DATASHEET

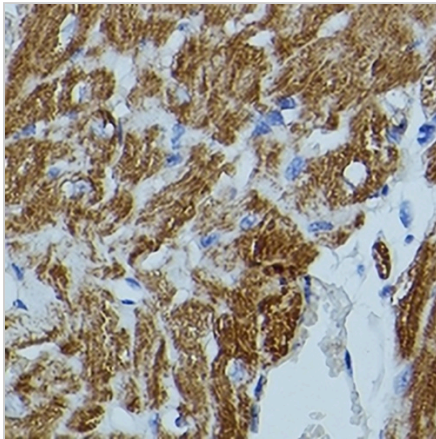
FKBP1B Rabbit Polyclonal Antibody

CAT. NO. APA15640

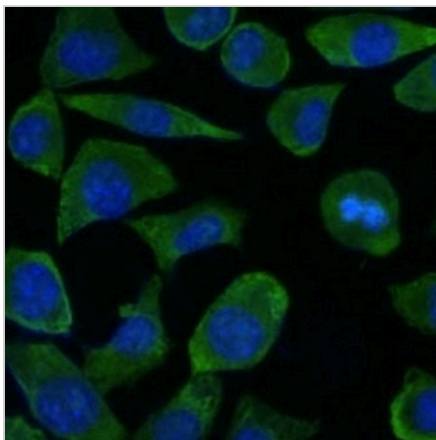
DATA



Western blot analysis of FKBP1B expression in 22Rv1 (A), mouse brain (B), rat brain (C) whole cell lysates. (Predicted band size: 8; 11 kD; Observed band size: 13 kD)



Immunohistochemical analysis of FKBP1B staining in mouse heart formalin fixed paraffin embedded tissue section. The section was pre-treated using heat mediated antigen retrieval with sodium citrate buffer (pH 6.0). The section was then incubated with the antibody at room temperature and detected using an HRP conjugated compact polymer system. DAB was used as the chromogen. The section was then counterstained with haematoxylin and mounted with DPX.



Immunofluorescent analysis of FKBP1B staining in L929 cells. Formalin-fixed cells were permeabilized with 0.1% Triton X-100 in TBS for 5-10 minutes and blocked with 3% BSA-PBS for 30 minutes at room temperature. Cells were probed with the primary antibody in 3% BSA-PBS and incubated overnight at 4 °C in a humidified chamber. Cells were washed with PBST and incubated with a Alexa Fluor 488-conjugated secondary antibody (green) in PBS at room temperature in the dark.

STORAGE

Store at 4°C short term. For long term storage, store at -20°C, avoiding freeze/thaw cycles.

NOTE

For Research Use Only. Not for diagnostic, therapeutics, prophylactic or in vivo use.