

DATASHEET

Folliculin Rabbit Polyclonal Antibody

CAT. NO. APA15643

KEY FEATURES

Target	Folliculin	Source / Host	Rabbit
Reactivity	Human, Mouse, Rat	Clonality	Polyclonal
Applications	WB, IF/ICC	Conjugation	Unconjugated
Form / Buffer	Liquid in 0.42% Potassium phosphate, 0.87% Sodium chloride, pH 7.3, 30% glycerol, and 0.01% sodium azide.		Storage at -20°C

BACKGROUND

Multi-functional protein, involved in both the cellular response to amino acid availability and in the regulation of glycolysis . GTPase-activating protein that plays a key role in the cellular response to amino acid availability through regulation of the non-canonical mTORC1 signaling cascade controlling the MIT/TFE factors TFEB and TFE3 . Activates mTORC1 by acting as a GTPase-activating protein: specifically stimulates GTP hydrolysis by RagC/RRAGC or RagD/RRAGD, promoting the conversion to the GDP-bound state of RagC/RRAGC or RagD/RRAGD, and thereby activating the kinase activity of mTORC1 . The GTPase-activating activity is inhibited during starvation and activated in presence of nutrients .

APPLICATION

To ensure optimal assay performance, AREX recommends conducting reagent titration tailored to each testing system for optimal detection results.

WB	1:500 - 1:2000
IF/ICC	1:50 - 1:200

*Results are sample-specific. Please refer to your local assay conditions and test parameters for reference.

PRODUCT OVERVIEW

Description	Rabbit polyclonal antibody to Folliculin
Specificity	Recognizes endogenous levels of Folliculin protein
Antibody Type	Primary antibody
Immunogen	Recombinant fusion protein of human Folliculin. The exact sequence is proprietary.
Purification	The antibody was purified by immunogen affinity chromatography.
Molecular Weight	Predicted: 20; Observed: 70 kD
Form/Buffer	Liquid in 0.42% Potassium phosphate, 0.87% Sodium chloride, pH 7.3, 30% glycerol, and 0.01% sodium azide.
Alternative Names	BHD; Folliculin; BHD skin lesion fibrofolliculoma protein; Birt-Hogg-Dube syndrome protein
Gene Symbol	FLCN
Entrez Gene	201163(Human); 216805(Mouse); 303185(Rat)
SwissProt	Q8NFG4(Human); Q8QZS3(Mouse); Q76JQ2(Rat)

*AREX continuously optimizes our products. Webpage content may not reflect the latest updates. For inquiries, please contact info@arexbio.com or your local distributor.

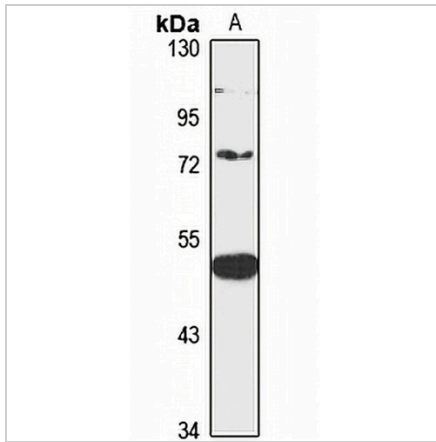
*Clone Number, Reactivity, Source/Host and Clonality can be found in the product name and Key Features section above.

DATASHEET

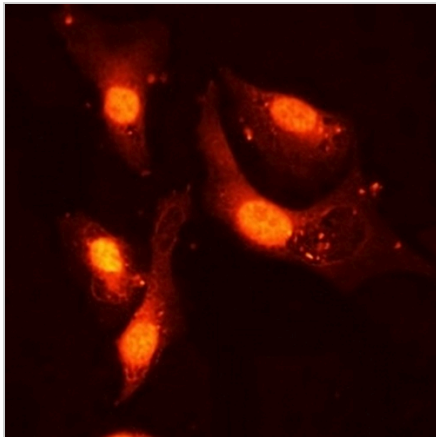
Folliculin Rabbit Polyclonal Antibody

CAT. NO. APA15643

DATA



Western blot analysis of Folliculin expression in A431 (A) whole cell lysates. (Predicted band size: 20; 37; 64 kD; Observed band size: 70 kD)



Immunofluorescent analysis of Folliculin staining in U2OS cells. Formalin-fixed cells were permeabilized with 0.1% Triton X-100 in TBS for 5-10 minutes and blocked with 3% BSA-PBS for 30 minutes at room temperature. Cells were probed with the primary antibody in 3% BSA-PBS and incubated overnight at 4 °C in a humidified chamber. Cells were washed with PBST and incubated with a Alexa Fluor 594-conjugated secondary antibody (red) in PBS at room temperature in the dark.

STORAGE

Store at 4°C short term. For long term storage, store at -20°C, avoiding freeze/thaw cycles.

NOTE

For Research Use Only. Not for diagnostic, therapeutics, prophylactic or in vivo use.