

**DATASHEET**

**FLVCR1 Rabbit Polyclonal Antibody**

CAT. NO. APA15645

**KEY FEATURES**

Target	FLVCR1	Source / Host	Rabbit
Reactivity	Human, Mouse, Rat	Clonality	Polyclonal
Applications	WB	Conjugation	Unconjugated
Form / Buffer	Liquid in 0.42% Potassium phosphate, 0.87% Sodium chloride, pH 7.3, 30% glycerol, and 0.01% sodium azide.		Storage at -20°C

**BACKGROUND**

Uniporter that mediates the transport of extracellular choline and ethanolamine into cells, thereby playing a key role in phospholipid biosynthesis . Choline and ethanolamine are the precursors of phosphatidylcholine and phosphatidylethanolamine, respectively, the two most abundant phospholipids . Transport is not coupled with proton transport and is exclusively driven by the choline (or ethanolamine) gradient across the plasma membrane . Also acts as a heme b transporter that mediates heme efflux from the cytoplasm to the extracellular compartment .

**APPLICATION**

To ensure optimal assay performance, AREX recommends conducting reagent titration tailored to each testing system for optimal detection results.

WB	1:500 - 1:2000
----	----------------

\*Results are sample-specific. Please refer to your local assay conditions and test parameters for reference.

**PRODUCT OVERVIEW**

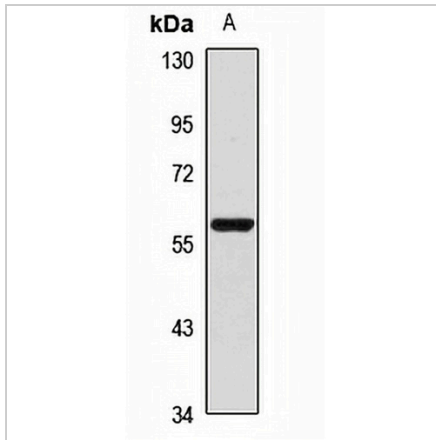
Description	Rabbit polyclonal antibody to FLVCR1
Specificity	Recognizes endogenous levels of FLVCR1 protein
Antibody Type	Primary antibody
Immunogen	KLH-conjugated synthetic peptide of human FLVCR1. The exact sequence is proprietary.
Purification	The antibody was purified by immunogen affinity chromatography.
Molecular Weight	Predicted: 30; Observed: 60 kD
Form/Buffer	Liquid in 0.42% Potassium phosphate, 0.87% Sodium chloride, pH 7.3, 30% glycerol, and 0.01% sodium azide.
Alternative Names	FLVCR; Feline leukemia virus subgroup C receptor-related protein 1; Feline leukemia virus subgroup C receptor; hFLVCR
Gene Symbol	FLVCR1
Entrez Gene	28982(Human); 226844(Mouse)
SwissProt	Q9Y5Y0(Human); B2RXV4(Mouse)

\*AREX continuously optimizes our products. Webpage content may not reflect the latest updates. For inquiries, please contact [info@arexbio.com](mailto:info@arexbio.com) or your local distributor.

\*Clone Number, Reactivity, Source/Host and Clonality can be found in the product name and Key Features section above.

**DATASHEET****FLVCR1 Rabbit Polyclonal Antibody**

CAT. NO. APA15645

**DATA**

Western blot analysis of FLVCR1 expression in Raji (A) whole cell lysates. (Predicted band size: 30; 59 kD; Observed band size: 60 kD)

**STORAGE**

Store at 4°C short term. For long term storage, store at -20°C, avoiding freeze/thaw cycles.

**NOTE**

For Research Use Only. Not for diagnostic, therapeutics, prophylactic or in vivo use.