

DATASHEET

BF-1 Rabbit Polyclonal Antibody

CAT. NO. APA15657

KEY FEATURES

Target	BF-1	Source / Host	Rabbit
Reactivity	Human, Mouse, Rat	Clonality	Polyclonal
Applications	WB, IF/ICC	Conjugation	Unconjugated
Form / Buffer	Liquid in 0.42% Potassium phosphate, 0.87% Sodium chloride, pH 7.3, 30% glycerol, and 0.01% sodium azide.		Storage at -20°C

BACKGROUND

Transcription repression factor which plays an important role in the establishment of the regional subdivision of the developing brain and in the development of the telencephalon.

APPLICATION

To ensure optimal assay performance, AREX recommends conducting reagent titration tailored to each testing system for optimal detection results.

WB	1:500 - 1:2000
IF/ICC	1:50 - 1:200

*Results are sample-specific. Please refer to your local assay conditions and test parameters for reference.

PRODUCT OVERVIEW

Description	Rabbit polyclonal antibody to BF-1
Specificity	Recognizes endogenous levels of BF-1 protein
Antibody Type	Primary antibody
Immunogen	KLH-conjugated synthetic peptide of human BF-1. The exact sequence is proprietary.
Purification	The antibody was purified by immunogen affinity chromatography.
Molecular Weight	Predicted: 52 kD; Observed: 52 kD
Form/Buffer	Liquid in 0.42% Potassium phosphate, 0.87% Sodium chloride, pH 7.3, 30% glycerol, and 0.01% sodium azide.
Alternative Names	FKH2; FKHL1; FKHL2; FKHL3; FKHL4; FOXG1A; FOXG1B; FOXG1C; Forkhead box protein G1; Brain factor 1; BF-1; BF1; Brain factor 2; BF-2; BF2; hBF-2; Forkhead box protein G1A; Forkhead box protein G1B; Forkhead box protein G1C; Forkhead-related protein FKHL1; HFK1; Forkhead-related protein FKHL2; HFK2; Forkhead-related protein FKHL3; HFK3
Gene Symbol	FOXG1
Entrez Gene	2290(Human); 15228(Mouse); 24370(Rat)
SwissProt	P55316(Human); Q60987(Mouse); Q00939(Rat)

*AREX continuously optimizes our products. Webpage content may not reflect the latest updates. For inquiries, please contact info@arexbio.com or your local distributor.

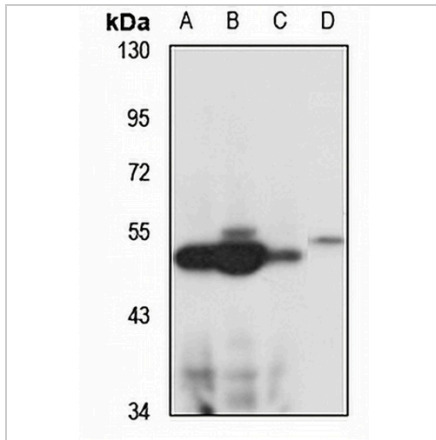
*Clone Number, Reactivity, Source/Host and Clonality can be found in the product name and Key Features section above.

DATASHEET

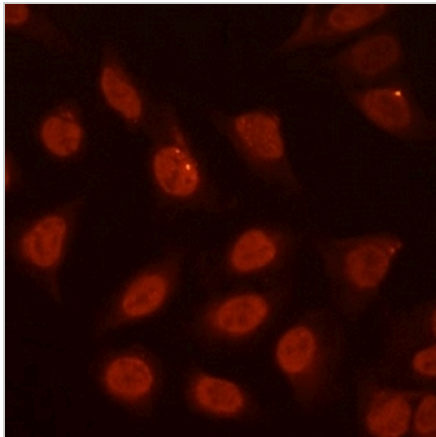
BF-1 Rabbit Polyclonal Antibody

CAT. NO. APA15657

DATA



Western blot analysis of BF-1 expression in HEK293T (A), mouse brain (B), mouse kidney (C), rat spleen (D) whole cell lysates. (Predicted band size: 52 kD; Observed band size: 52 kD)



Immunofluorescent analysis of BF-1 staining in U2OS cells. Formalin-fixed cells were permeabilized with 0.1% Triton X-100 in TBS for 5-10 minutes and blocked with 3% BSA-PBS for 30 minutes at room temperature. Cells were probed with the primary antibody in 3% BSA-PBS and incubated overnight at 4 °C in a humidified chamber. Cells were washed with PBST and incubated with a Alexa Fluor 594-conjugated secondary antibody (red) in PBS at room temperature in the dark.

STORAGE

Store at 4°C short term. For long term storage, store at -20°C, avoiding freeze/thaw cycles.

NOTE

For Research Use Only. Not for diagnostic, therapeutics, prophylactic or in vivo use.