

DATASHEET

FOXR2 Rabbit Polyclonal Antibody

CAT. NO. APA15659

KEY FEATURES

Target	FOXR2	Source / Host	Rabbit
Reactivity	Human, Mouse, Rat	Clonality	Polyclonal
Applications	WB	Conjugation	Unconjugated
Form / Buffer	Liquid in 0.42% Potassium phosphate, 0.87% Sodium chloride, pH 7.3, 30% glycerol, and 0.01% sodium azide.		Storage at -20°C

BACKGROUND

Forkhead box protein R2 (FOXR2), also known as Forkhead box protein N6. Subcellular location: Nucleus Tissue specificity: Expressed in breast cancer cell lines and primary cancer

APPLICATION

To ensure optimal assay performance, AREX recommends conducting reagent titration tailored to each testing system for optimal detection results.

WB	1:500 - 1:2000
----	----------------

*Results are sample-specific. Please refer to your local assay conditions and test parameters for reference.

PRODUCT OVERVIEW

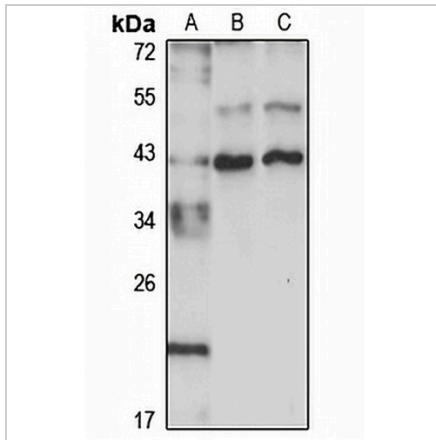
Description	Rabbit polyclonal antibody to FOXR2
Specificity	Recognizes endogenous levels of FOXR2 protein
Antibody Type	Primary antibody
Immunogen	Recombinant fusion protein of human FOXR2. The exact sequence is proprietary.
Purification	The antibody was purified by immunogen affinity chromatography.
Molecular Weight	Predicted: 35 kD; Observed: 40 kD
Form/Buffer	Liquid in 0.42% Potassium phosphate, 0.87% Sodium chloride, pH 7.3, 30% glycerol, and 0.01% sodium azide.
Alternative Names	FOXN6; Forkhead box protein R2; Forkhead box protein N6
Gene Symbol	FOXR2
Entrez Gene	139628(Human); 436240(Mouse)
SwissProt	Q6PJJ5(Human); Q3UM89(Mouse)

*AREX continuously optimizes our products. Webpage content may not reflect the latest updates. For inquiries, please contact info@arexbio.com or your local distributor.

*Clone Number, Reactivity, Source/Host and Clonality can be found in the product name and Key Features section above.

DATASHEET**FOXR2 Rabbit Polyclonal Antibody**

CAT. NO. APA15659

DATA

Western blot analysis of FOXR2 expression in Raji (A), mouse brain (B), rat brain (C) whole cell lysates. (Predicted band size: 35 kD; Observed band size: 40 kD)

STORAGE

Store at 4°C short term. For long term storage, store at -20°C, avoiding freeze/thaw cycles.

NOTE

For Research Use Only. Not for diagnostic, therapeutics, prophylactic or in vivo use.